



Intelligent solar control

Electronically tintable glass:

- Optimum interior comfort.
- Complete clarity of vision.
- Improved energy efficiency.

SageGlass® Europe & Middle East
Vetrotech Saint-Gobain International AG,
Switzerland

Phone: +41 31 336 82 17

europa@sageglass.com

sageglass.co.uk

User manual for SageGlass® electronically tintable glass

The glass

SageGlass® is electronically tintable insulating glass manufactured by Saint-Gobain, designed to increase comfort while reducing energy costs.

What it does

SageGlass® offers dynamic solar protection that allows users to control the amount of direct or indirect sunlight entering the room, which also restricts heat gain.

How it works

SageGlass® is electrochromic: coated with very thin layers of ceramic material, the glass darkens when a low-voltage electrical current is applied. It can be made clear again in the same way.

The benefit

By being able to control solar light and heat gain in a room without the need for blinds, the view of the outdoors is maximised. Energy costs are also greatly reduced.

For further information and explanatory videos, visit www.sageglass.co.uk

Tint levels

There are four tint levels:

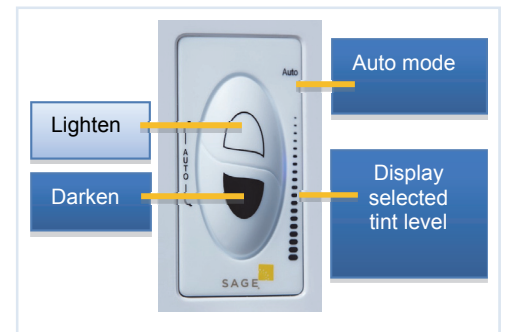
- Clear – for cloudy weather with no sunshine
- Slightly tinted – for clear skies with variable cloud but no direct sunshine
- Tinted – for clear skies without direct sunshine
- Maximum tint – for full sunshine, to prevent glare and heat gain



Automatic or manual operation

Automatic mode

Depending on the brightness outside, the system darkens or lightens the glass. The "auto" LED on the switch turns on. The aim is to minimise direct glare caused by daylight, while enabling as much natural light as possible to pass through. A light sensor fitted to the façade is used to control the brightness automatically. To come back to the automatic mode immediately, press the two buttons at the same time.



Manual mode

The user can take control at any time and darken or lighten the top, middle or bottom of the glass using the wall switches. The LEDs indicate the tint level. The system switches back to automatic mode after a specified time.

Switching speed

The system progressively and silently switches from one state to another. This can take between 5 and 15 minutes - depending on the external temperature.

Special notes

Privacy

- SageGlass® glazing does not offer a solution to completely protect the privacy of occupants. Like any tinted glass, it remains transparent.
- For example, at night, when the lights are on in an apartment, some shadows are visible from outside.

Unevenness of colour

- The glass may appear uneven in colour. This effect is normal. It just means the glass is becoming darker or lighter.
- Note that at temperatures below 15°C, this phenomenon may be amplified.

Switching time

- When the temperature of the glass is below 15°C, the system will change more slowly. When the sun shines on the glass, the glass will warm up and work more quickly. The glass has an operating range of -25°C to +80°C (outdoor air temperature).

Maintenance

SageGlass® windows can be cleaned like any other window and require no special maintenance.

