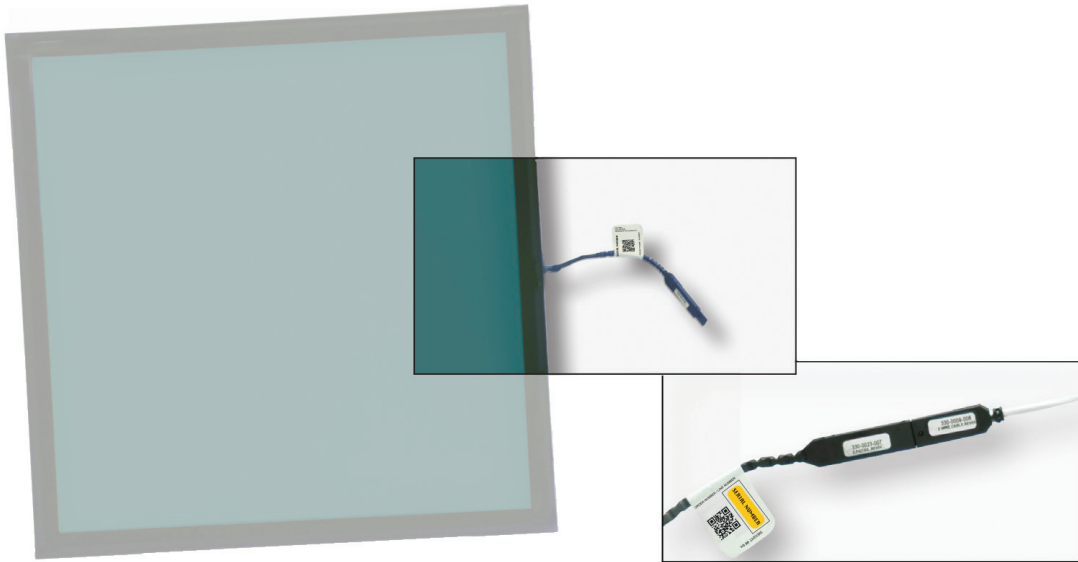
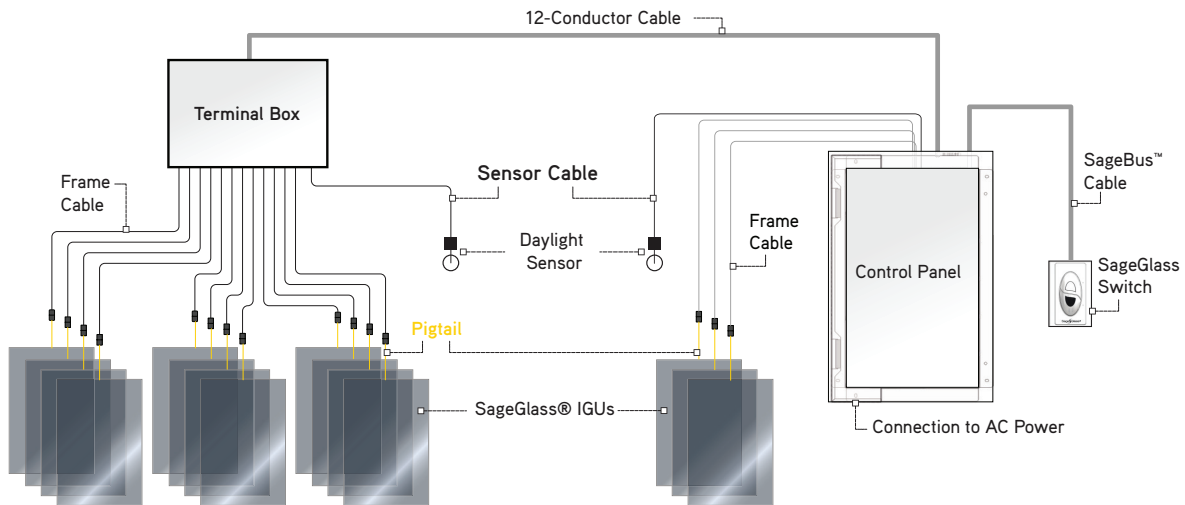


CUT SHEET:
IGU PIGTAIL



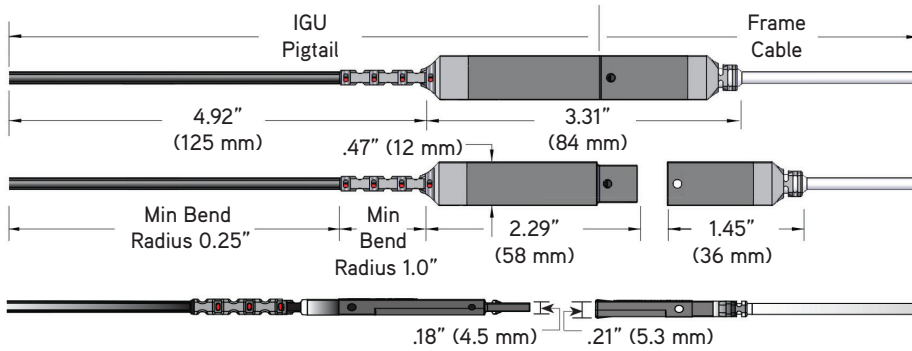
PRODUCT OVERVIEW

The SageGlass® IGU Pigtail is a cable that extends from one edge of each SageGlass insulating glass unit (IGU) and connects to the Frame Cable, providing the electrical connection to the individual SageGlass IGUs. It also stores an electronic serial number and IGU-specific data that can be used for system start-up, commissioning and troubleshooting. Each IGU will have one pigtail. For pigtail locations see document SCS-121.



The IGU Pigtail connects in the glazing pocket to the Frame Cable, which runs through the framing system to the Terminal Box or Control Panel.

PRODUCT DIMENSIONS



PIGTAIL LABEL

FRONT

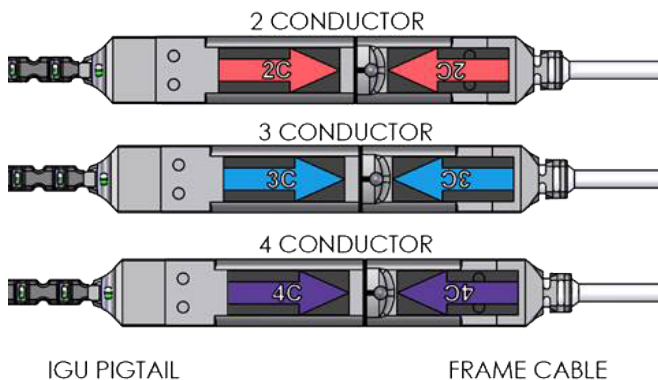
BACK



Invalid Reference Tag Characters: % ^ & @ { } _ ,

CONDUCTOR COUNT

CORRECT CABLE (2C, 3C, OR 4C) MUST BE USED PER WIRING/ELEVATION DIAGRAM



IGU PIGTAIL

FRAME CABLE

RATINGS & CERTIFICATIONS

IP67
RoHS certified

GET IN TOUCH

SageGlass® is the pioneer of the world's smartest dynamic glass and is transforming the indoor experience for people by connecting the built and natural environments. Electronically tintable SageGlass tints or clears on demand to control sunlight and prevent heat and glare without the need for blinds or shades. SageGlass dramatically reduces energy demand and the need for HVAC by blocking up to 91 percent of solar heat. As part of Saint-Gobain, SageGlass is backed by more than 350 years of building science expertise that only the world leader in sustainable environments can provide.

sales.emea@sageglass.com
www.sageglass.com



Vetrotech Saint-Gobain International
Bernstrasse 43 • 2175 Flamatt • Switzerland

© SAGE Electrochromics, Inc. All rights reserved. SageGlass is a registered trademark of SAGE Electrochromics, Inc. SCS-091.0

