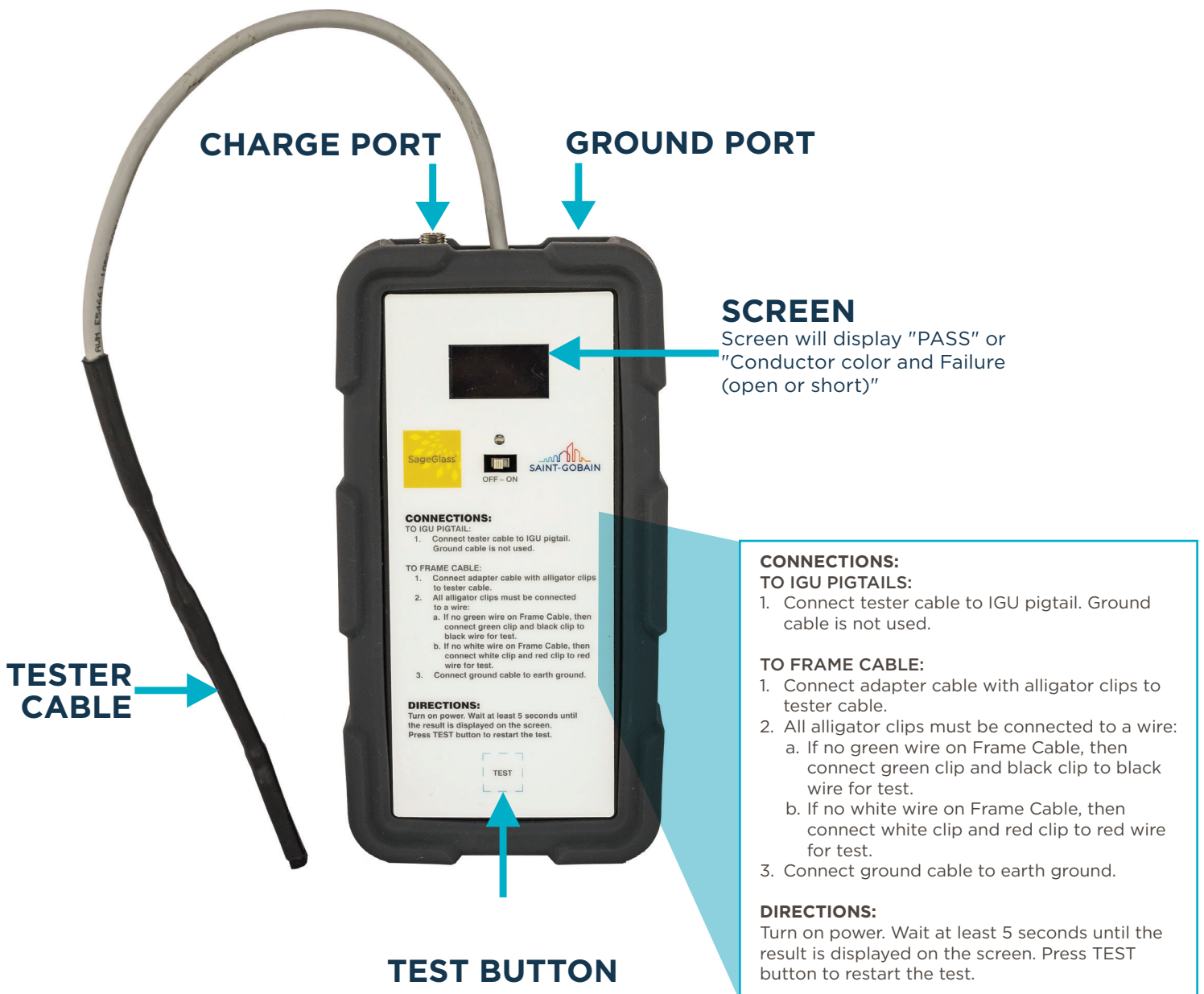


# PRODUCT SHEET

## FIELD WIRING TESTER

The SageGlass Field Wiring Tester is a tool for glaziers and electricians to test the Frame Cable running from the IGU to the Control Panel or Terminal Box. The Field Wiring Tester will check for opens, internal conductor shorts, and shorts to earth ground.



# PRODUCT SHEET

## FIELD WIRING TESTER

### PRE-TEST CHECK LIST

- Frame Cable can be tested only when an IGU is connected.
- IGU must not be tinted even partially during the test.

### GROUND CONNECTION

- When testing Frame Cable near Glazing System Frame (GSF) ground connection shall be connected to GSF.
- When testing Frame Cable near SageGlass control panel ground connection shall be connected to earth ground.

### CHARGING & BATTERY LIFE

The Field Wiring Tester runs off of a rechargeable battery. If the screen display has a "Low Battery" message the unit must be charged. Only use the provided charger to charge the unit. The unit may be used while charging.

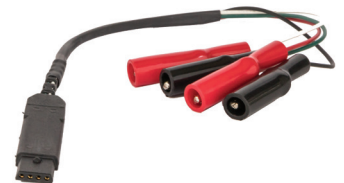
### SHIPPING & RETURNS

When done using the wiring tester please return to SageGlass at the below address. A return label has been included in the box for your convenience.

SAGE ELECTROCHROMICS, INC.  
2 Sage Way, Faribault, MN 55021, USA

### CABLE ACCESSORIES

#### ADAPTER CABLE



#### CHARGING CABLE



#### GROUND CABLE



## WHY SAGEGLASS?

**1,000+**  
Installations

**27+**  
Countries

**560+**  
Patents

SageGlass® is the pioneer of the world's smartest dynamic glass. Electronically tintable SageGlass tints or clears automatically to optimize daylight levels while preventing heat and glare without the need for blinds or shades. SageGlass delivers superior comfort, enhances occupant well-being and saves energy. As part of Saint-Gobain, SageGlass is backed by more than 350 years of building science expertise that only the world leader in sustainable environments can provide.

For additional product and instructional information, visit: [sageglass.com/resources](https://sageglass.com/resources)