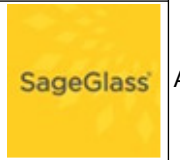


	Name	Date
Drawn by	JSC	22 1' 2016
Approved by	AR	22 1' 2016

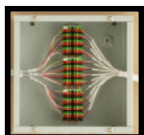
CONTROL ARCHITECTURE





CONTROL PANEL

- > contains :
 - SIM : CPU
 - controllers
 - communication interface : LONWORKS, BACNET...
- > 3 sizes available :
 - 435mm x 670mm x 125mm
 - 520mm x 970mm x 125mm
 - 520mm x 1375mm x 125mm
- > power supply 230Vac
- > cable outlet with custom connectors : 38mm x 12mm x 5mm



TERMINAL BOX

- > allows to connect :
 - inlet : until 24 glass panes (or frame cables)
 - outlet: until 4 12-conductors cables
- > 290mm x 400mm x 65mm



SAGEGLASS® WALL SWITCH

- > power supply 12V via SAGE BUS
- > communication via SAGE BUS
- > allows to drive the installation in manual mode
- > size : 105 mm x 45 mm x 23 mm



EXTERIOR DAYLIGHT SENSORS

- > measures illumination in lux
- > allows to drive the installation in auto mode
- > glare management

FRAME CABLE – GLAZING

- > 1 cable per pane
- > 2, 3 or 4 conductors (depending on the number of busbars)
- > cross section : 0,33mm²
- > 3 lengths : 15, 23 or 38 meters
- > diameter max : 3,5mm
- > equipped with a custom connector SAGEGLASS®

FRAME CABLE – SENSOR

- > 1 cable per sensor
- > 3 conductors
- > cross section : 0,33mm²
- > 3 lengths : 15, 23 or 38 meters
- > diameter max : 3,5mm
- > equipped with a custom connector

12-CONDUCTORS CABLE

- > 12 conductors
- > cross section : 0,82mm² or 1,31mm²
- > length : 150 meters (spool)
- > diameter max : 8mm

COMMUNICATION CABLE SAGE BUS

- > 2 cables for 12V power supply
- > 2 shielded cable for communication
- > communication protocol SAGEGLASS®
- > length : 75 meters (spool)

MAXIMAL DISTANCE BETWEEN GLAZING & CONTROL PANELS :

- > Option 1 – up to 75 meters
- From Glazing to Terminal Boxes, frame cable glazing: maxi 15 meters
- From Terminal Boxes to Control Panel, 12-conductors cable (cross section 0,82mm²): maxi 60 meters
- > Option 2 – 61 meters
- From Glazing to Terminal Boxes, frame cable glazing: 23 meters
- From Terminal Boxes to Control Panel, 12-conductors cable (cross section 0,82mm²): 38 meters
- > Option 3 – 83 meters
- From Glazing to Terminal Boxes, frame cable glazing: 23 meters
- From Terminal Boxes to Control Panel, 12-conductors cable (cross section 1,31mm²): 60 meters
- > Option 4 – 105 meters
- From Glazing to Terminal Boxes, frame cable glazing: 15 meters
- From Terminal Boxes to Control Panel, 12-conductors cable (cross section 1,31mm²): 90 meters

	Name	Date
Drawn by	JSC	22 11 2016
Approved by	AR	22 11 2016

**BILL OF MATERIALS
SUPPLIED BY SAGEGLASS**

