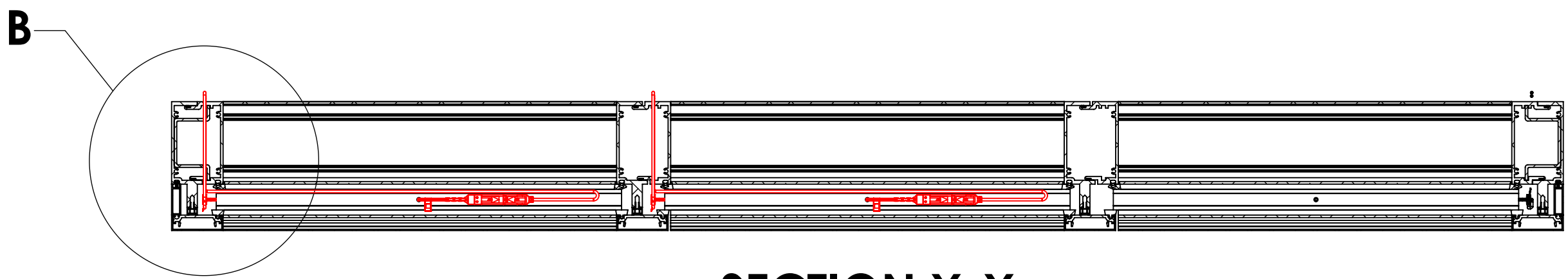
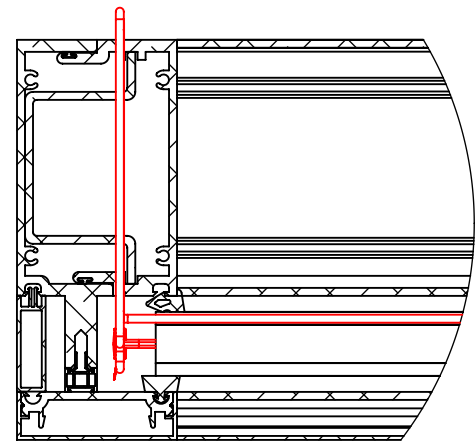


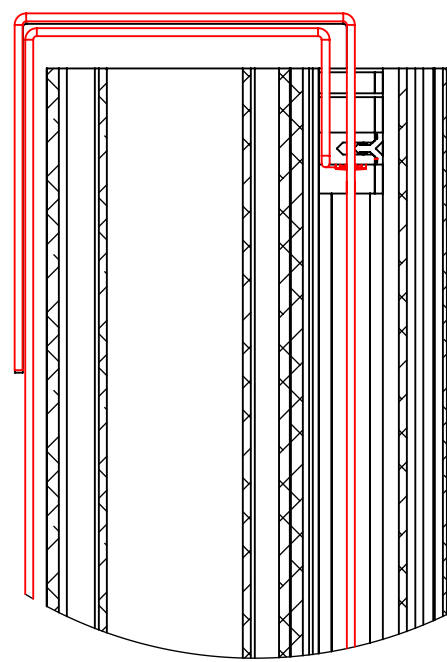
OVERVIEW



SECTION X-X
SCALE 1 : 6



DETAIL B
SCALE 1 : 3

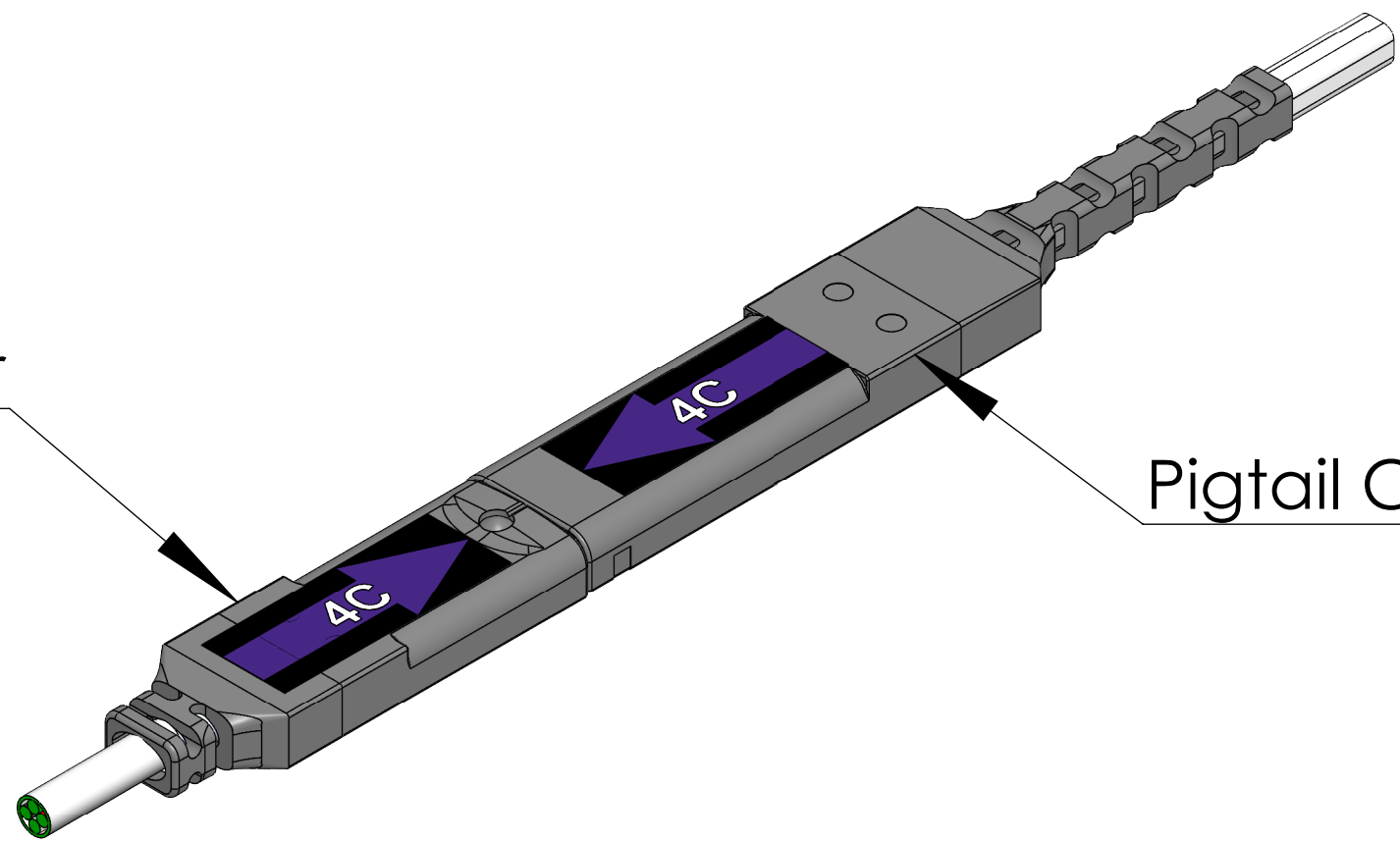


DETAIL A
SCALE 1 : 3

Connector Assembly

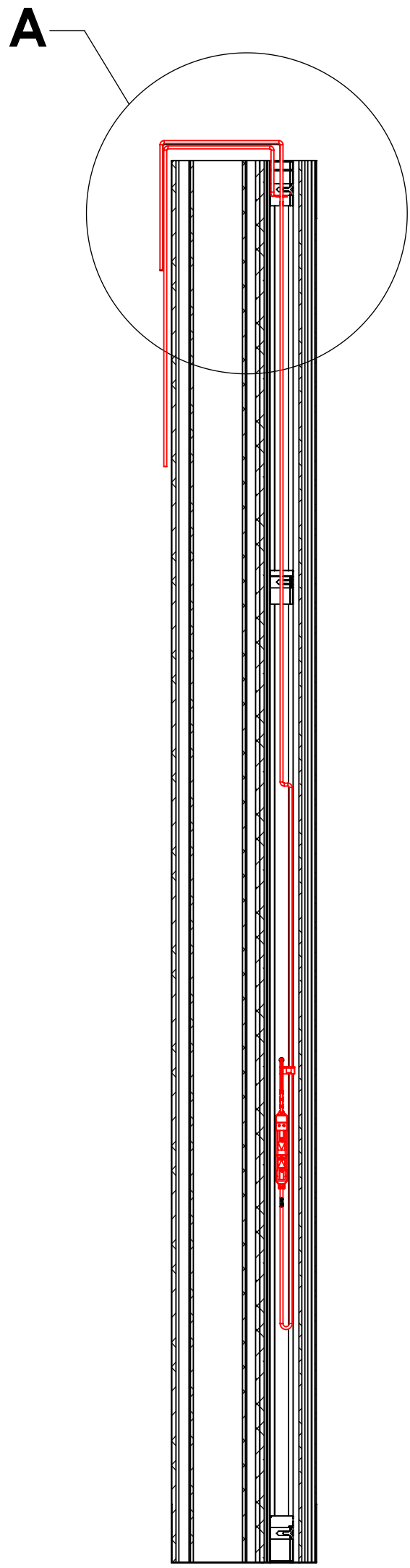
Frame Cable Connector

Pigtail Connector

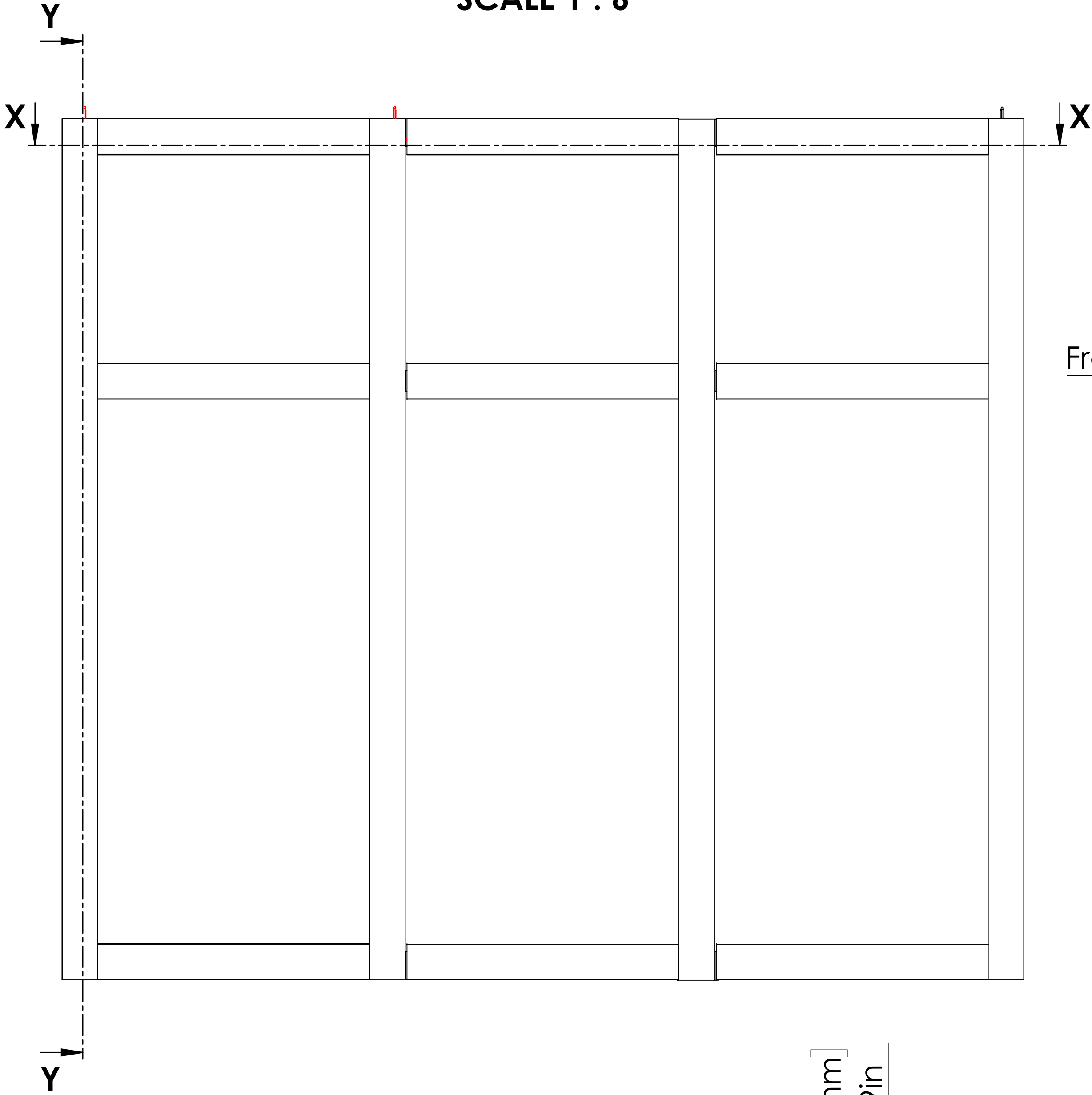


Recommended Steps for Installation:

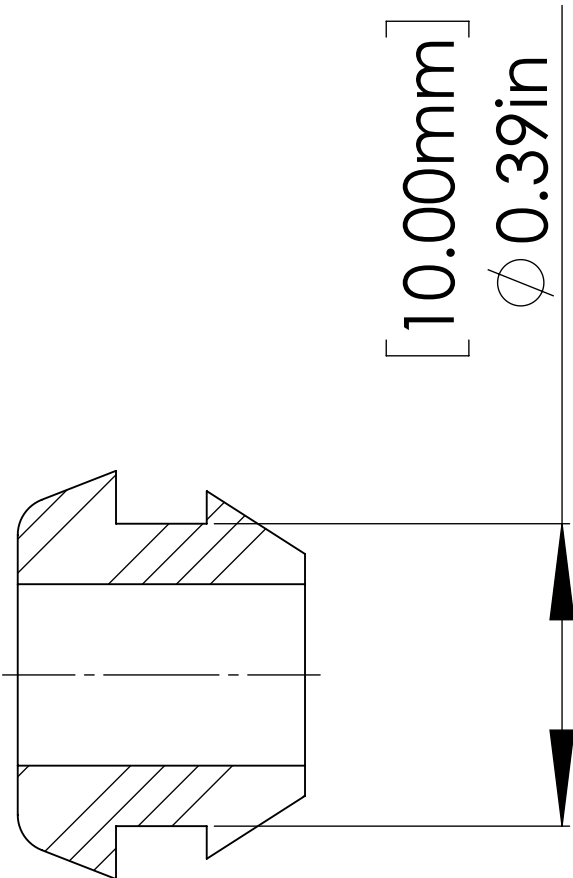
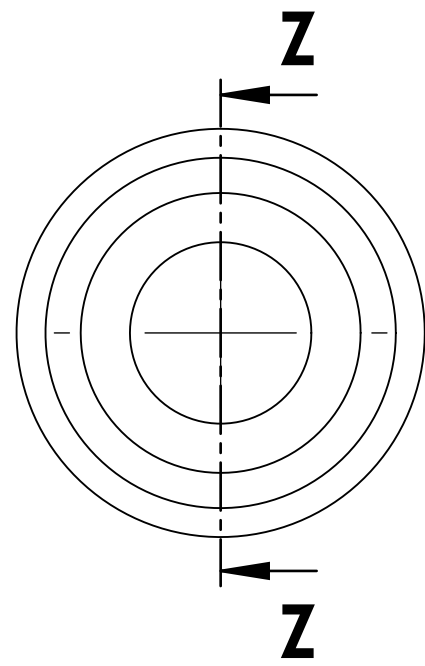
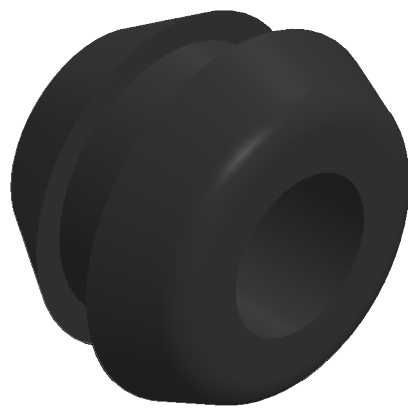
1. Drill 10 mm hole for frame cable grommet.
2. De-bur hole using hand held file.
3. Utilize silicone Dow 795 or similar adhesive to secure grommet in hole.
4. Feed frame cable through the grommeted hole with the connection point remaining in the glazing pocket. (SSG applications may require a cutout slot allowing the connection of the pigtail and frame cable to sit flush and not disrupt the smooth finish of the SSG).
5. If factory glazed, pigtail and frame cable are to be assembled inside the glazing pocket during the factory assembly of IGU and frame cable to be protected during transport and installation at site. Protect pigtail and frame cable at all times.
6. Glazier must label frame cable to match corresponding IGU per wiring diagram. If not enough room inside glazing pocket, bring the pigtail to frame cable connection out to a suitable location.
7. While installing glass, connect the pigtail to the frame cable and create a service loop in the glazing pocket.
8. Finish glazing ensuring none of the wires are pinched or damaged.
9. Cable bundled at the mullion exit to be protected.
10. Use the provided Field Wiring Tester after each frame cable is routed through the frame.
11. This drawing shows frame cable routing options, but other options may work as well or better. Service loop, protecting, testing, and labelling the frame cable is required.



SECTION Y-Y
SCALE 1 : 6

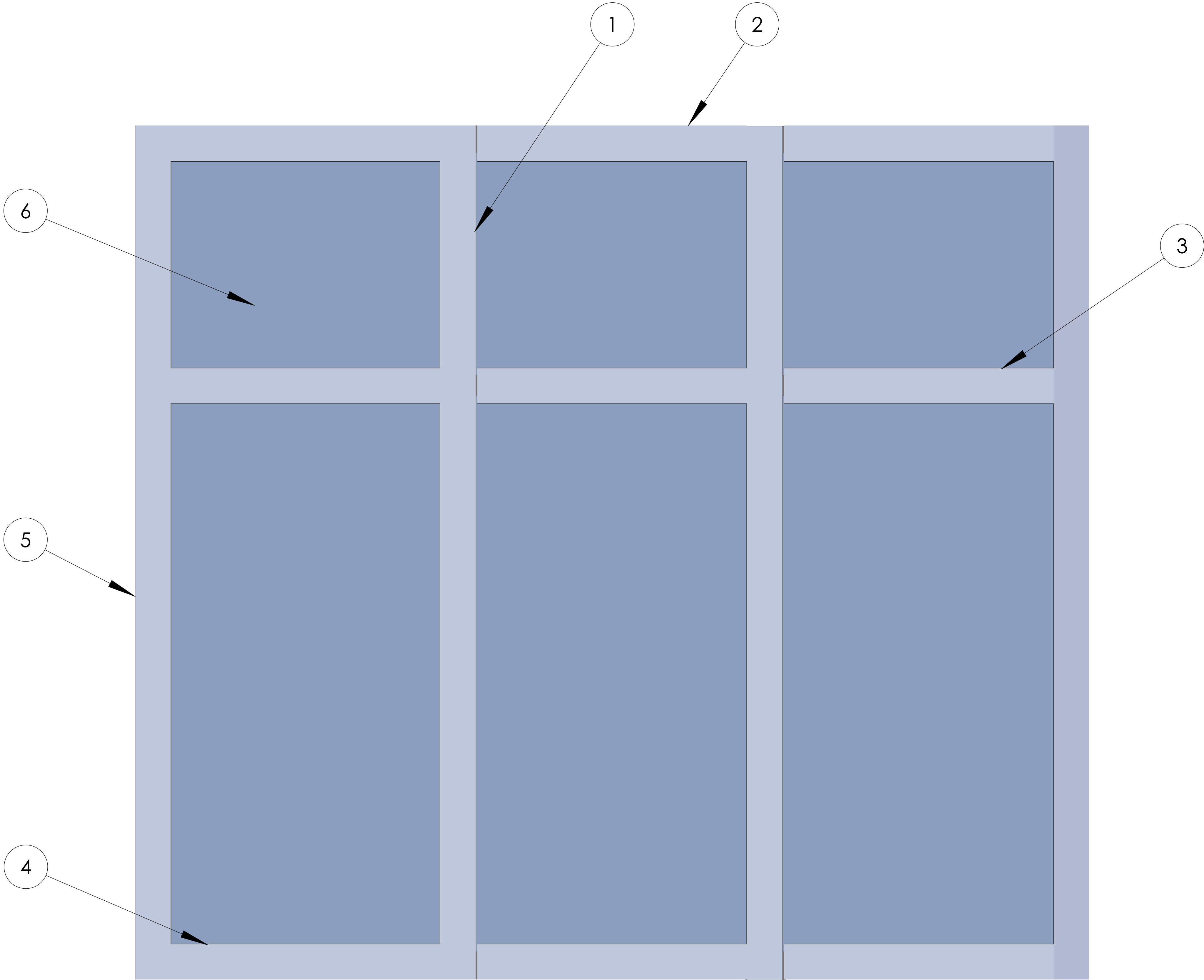


SECTION Z-Z
SCALE 4 : 1




SAGE Electrochromics Inc.		DRAWING SHEET A1	
ALL DIMENSIONS ARE IN "inches"		REVISION	APPROVED BY DATE
DRAWN BY	TSS		
CHECKED BY			
DESCRIPTION :			
Wausau_Superwall			
SCALE: 1:8	DATE: 27-01-2023	SHEET NO	1 OF 7

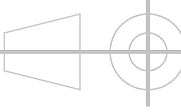
ASSEMBLED FRAME



- ① - MULLION FRAME WITH OFFSET STEM
- ② - PERIMETER FRAME
- ③ - INTERMEDIATE INTERIOR GLAZED
- ④ - VISION SPANDREL INTERMEDIATE
- ⑤ - PERIMETER FRAME WITH OFFSET STEM-1
- ⑥ - SAGEGLASS



SAGE Electrochromics Inc.



ALL DIMENSIONS ARE IN "Inches"

DRAWN BY

TSS

CHECKED BY

DESCRIPTION :

Wausau_Superwall

SCALE: 1:6

DATE : 27-01-2023

DRAWING SHEET

A1

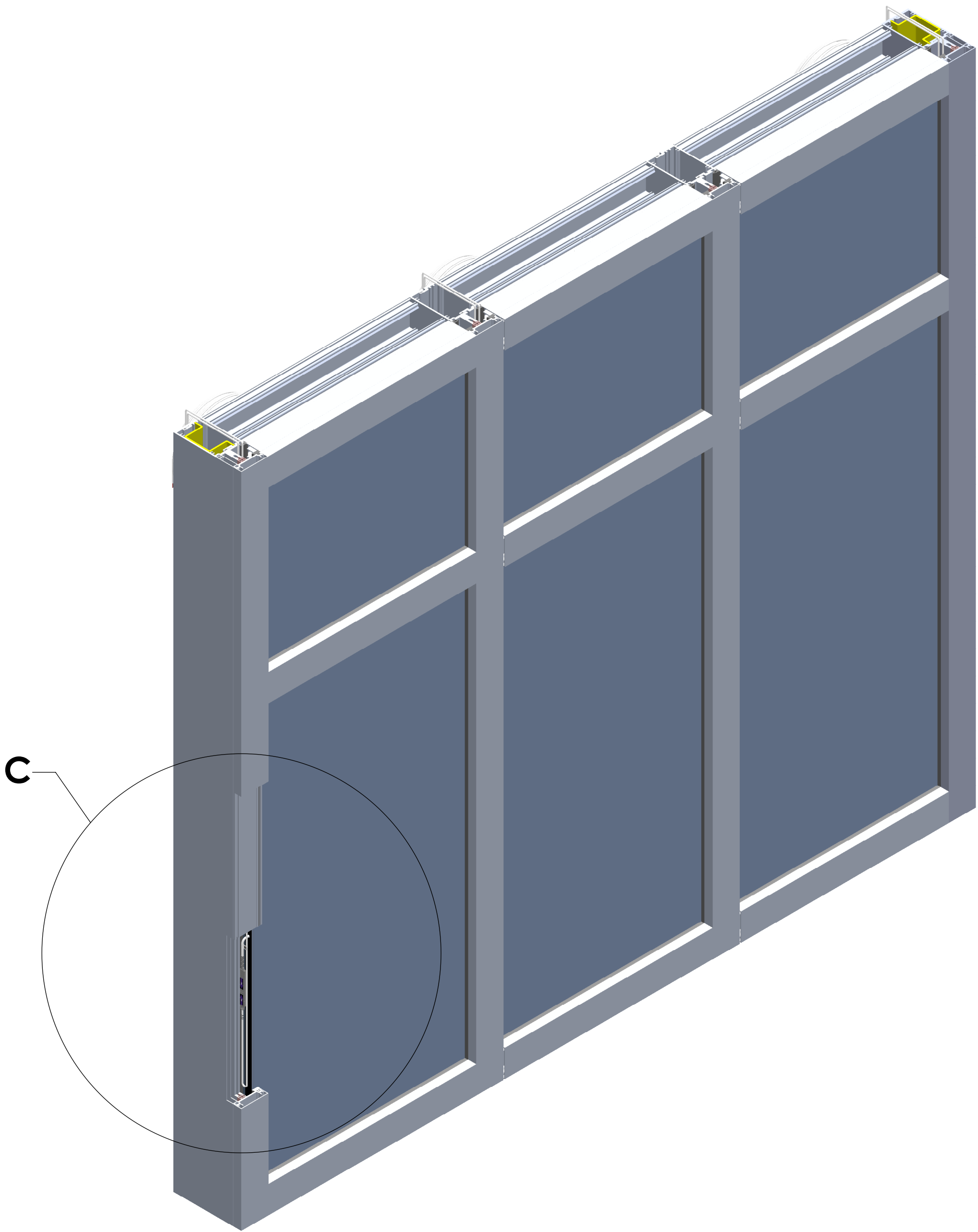
REVISION

APPROVED BY DATE

SHEET NO

2 OF 7

THE DRAWING IS THE PROPERTY AND COPYRIGHT OF SAGE ELECTROCHROMICS INC. REPRODUCTION OR USE WITHOUT WRITTEN CONSENT IS PROHIBITED. DO NOT SCALE THE DRAWING



7

REFERENCE TAG

FRAME CABLE EXITING THE GLAZING POCKET OF THE MULLION

CONNECTOR ASSEMBLY INSIDE GLAZING POCKET OF VERTICAL MULLION

SERVICE LOOP

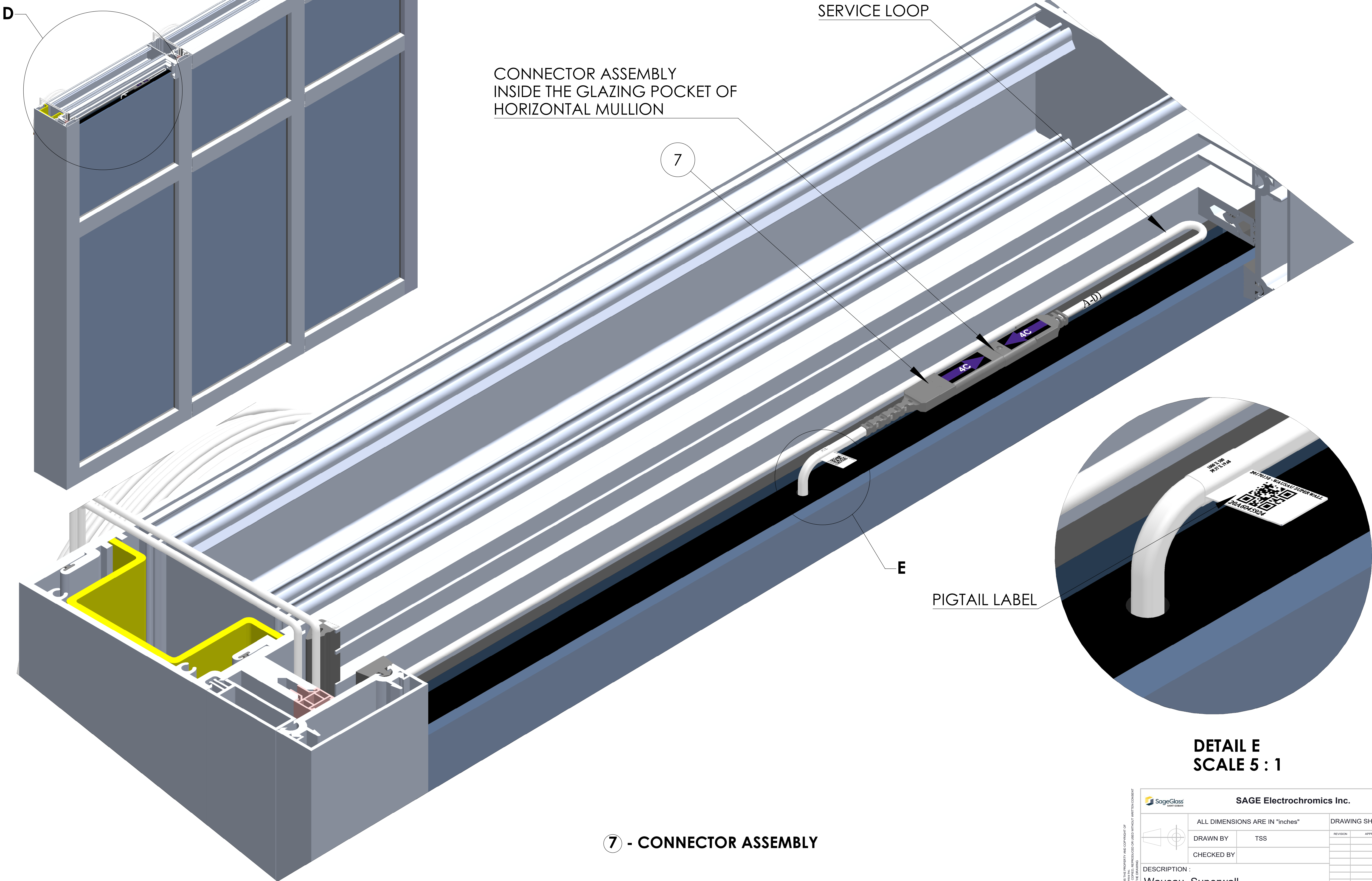
7 - CONNECTOR ASSEMBLY



DETAIL C
SCALE 2 : 3

SAGE Electrochromics Inc.		DRAWING SHEET		A1
	ALL DIMENSIONS ARE IN "Inches"		REVISION	APPROVED BY DATE
	DRAWN BY	TSS		
	CHECKED BY			
DESCRIPTION :				
Wausau_Superwall				
SCALE: 1:6		DATE : 27-01-2023		SHEET NO 3 OF 7

CONNECTOR ASSEMBLY - HORIZONTAL MULLION



DETAIL E
SCALE 5 : 1

7 - CONNECTOR ASSEMBLY

SageGlass

SMART GLASS

SAGE

Electrochromics Inc.

ALL DIMENSIONS ARE IN "inches"

DRAWN BY

TSS

CHECKED BY

DRAWING SHEET

A1

REVISION

APPROVED BY DATE

DESCRIPTION :

Wausau_Superwall

SCALE: 1:6

DATE : 27-01-2023

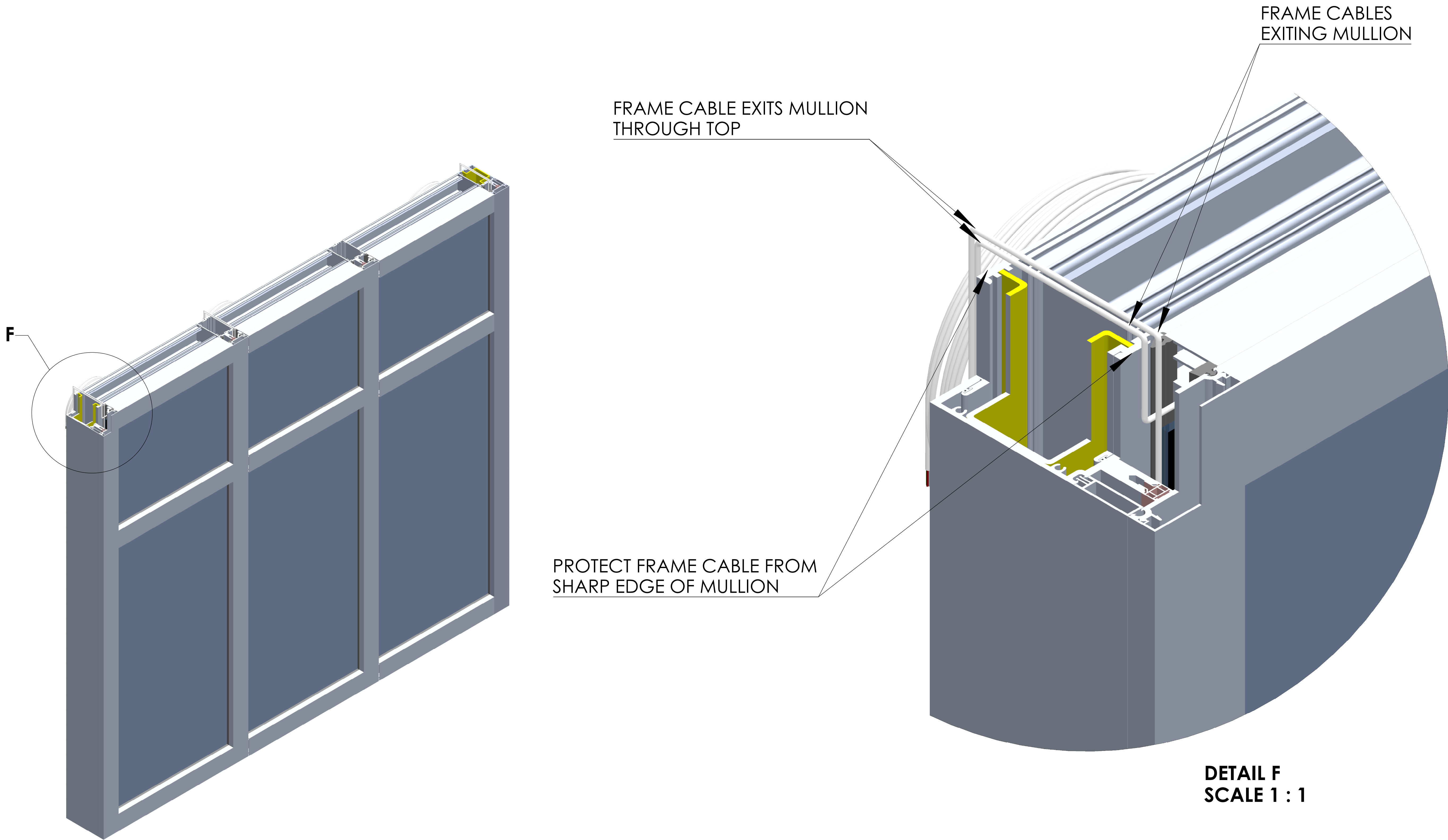
SHEET NO


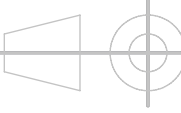
4 OF 7

THIS DRAWING IS THE PROPERTY OF AND COPYRIGHT OF SAGE ELECTROCHROMICS INC. IT SHALL NOT BE COPIED, REPRODUCED OR USED WITHOUT WRITTEN CONSENT OF SAGE ELECTROCHROMICS INC.

SCALE THE DRAWING

FRAME CABLE ROUTING



		SAGE Electrochromics Inc.	
	ALL DIMENSIONS ARE IN "Inches"		DRAWING SHEET
	DRAWN BY	TSS	A1
	CHECKED BY		
	DESCRIPTION :		
Wausau_Superwall			
SCALE: 1:6		DATE : 27-01-2023	
		SHEET NO	5 OF 7


SITE INSTALLED FRAME AND REF TAGS

PROTECT FRAME CABLE FROM SHARP EDGE OF MULLION

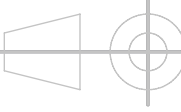
FRAME CABLES COILED, SECURED AND PROTECTED BEFORE AND AFTER INSTALLATION AT SITE

REFERENCE TAGS

DETAIL H
SCALE 1 : 1.5



SAGE Electrochromics Inc.



ALL DIMENSIONS ARE IN "Inches"

DESCRIPTION :

Wausau_Superwall

SCALE: 1:6

DATE : 27-01-2023

DRAWING SHEET

A1

DRAWN BY

TSS

CHECKED BY

REVISION

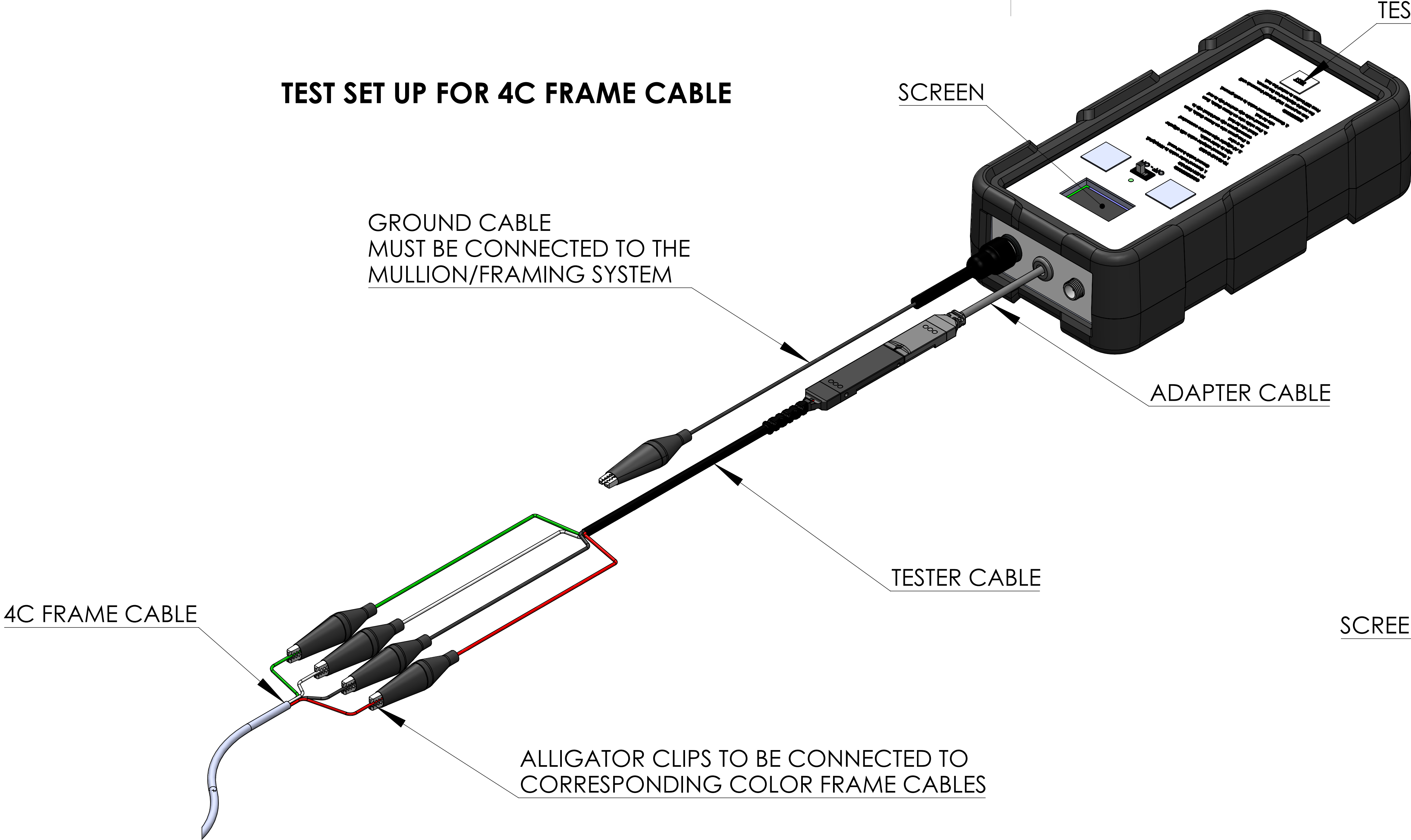
APPROVED BY DATE

SHEET NO

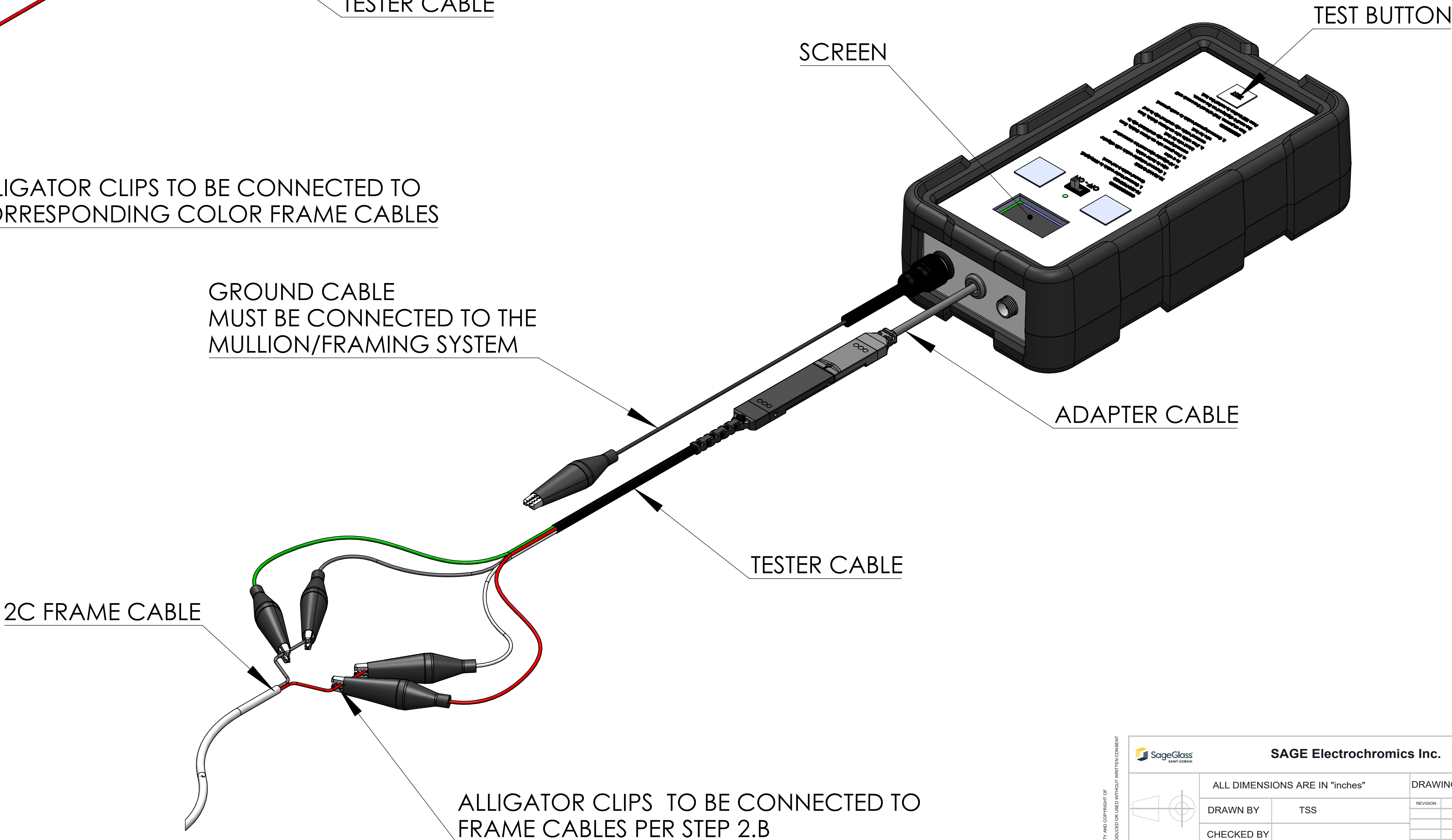
6 OF 7

THIS DRAWING IS THE PROPERTY AND COPYRIGHT OF SAGE ELECTROCHROMICS INC. REPRODUCTION OR USE WITHOUT WRITTEN CONSENT IS PROHIBITED. DO NOT SCALE THE DRAWING

TEST SET UP FOR 4C FRAME CABLE



TEST SET UP FOR 2C FRAME CABLE



CONNECTIONS:

TO FRAME CABLE:

1. Connect adapter cable with alligator clips to tester cable.
2. All alligator clips must be connected to a wire:
 - a. If 4-Conductor frame cable, connect each alligator clip to the corresponding frame cable wire.
 - b. If 2-Conductor frame cable, connect red and white alligator clips to red frame cable wire and black and green alligator clips to black frame cable wire.


3. Connect ground cable to earth ground. (mullion / framing system)

TO IGU PIGTAILS:

1. Connect tester cable to IGU pigtail. Ground cable is not used.

DIRECTIONS:

Turn on power. Wait at least 5 seconds until the result is displayed on the screen. Press TEST button to restart the test.



SAGE Electrochromics Inc.

</