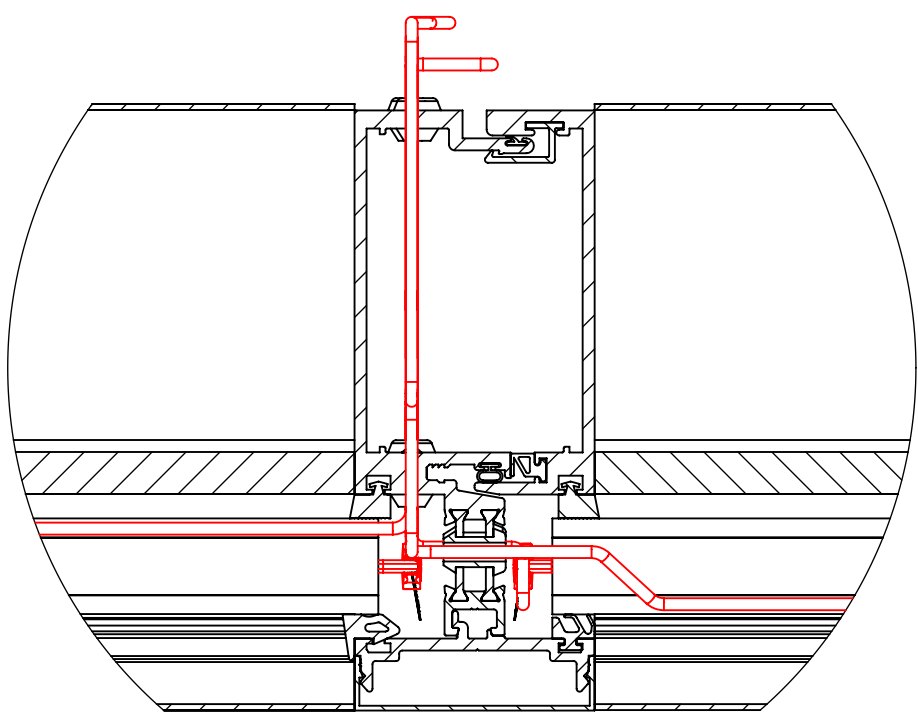
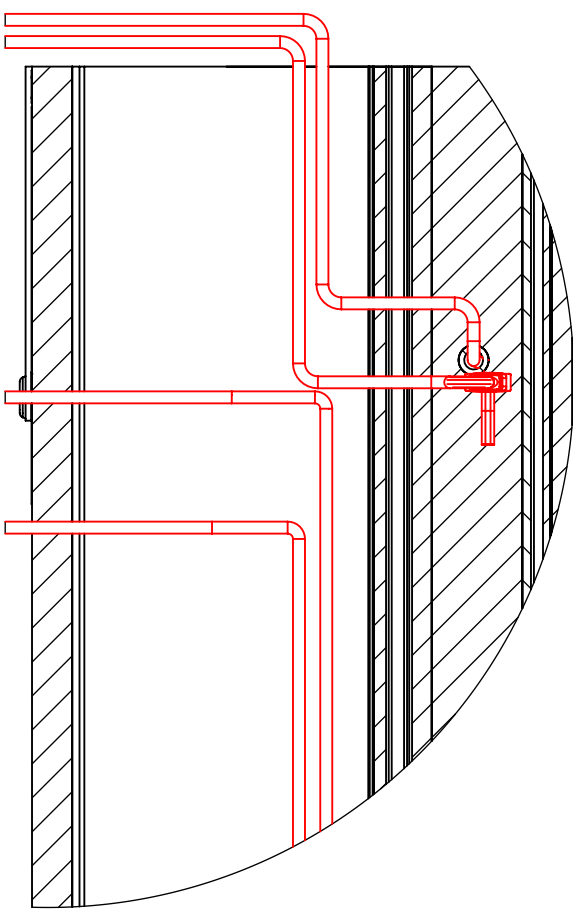


OVERVIEW

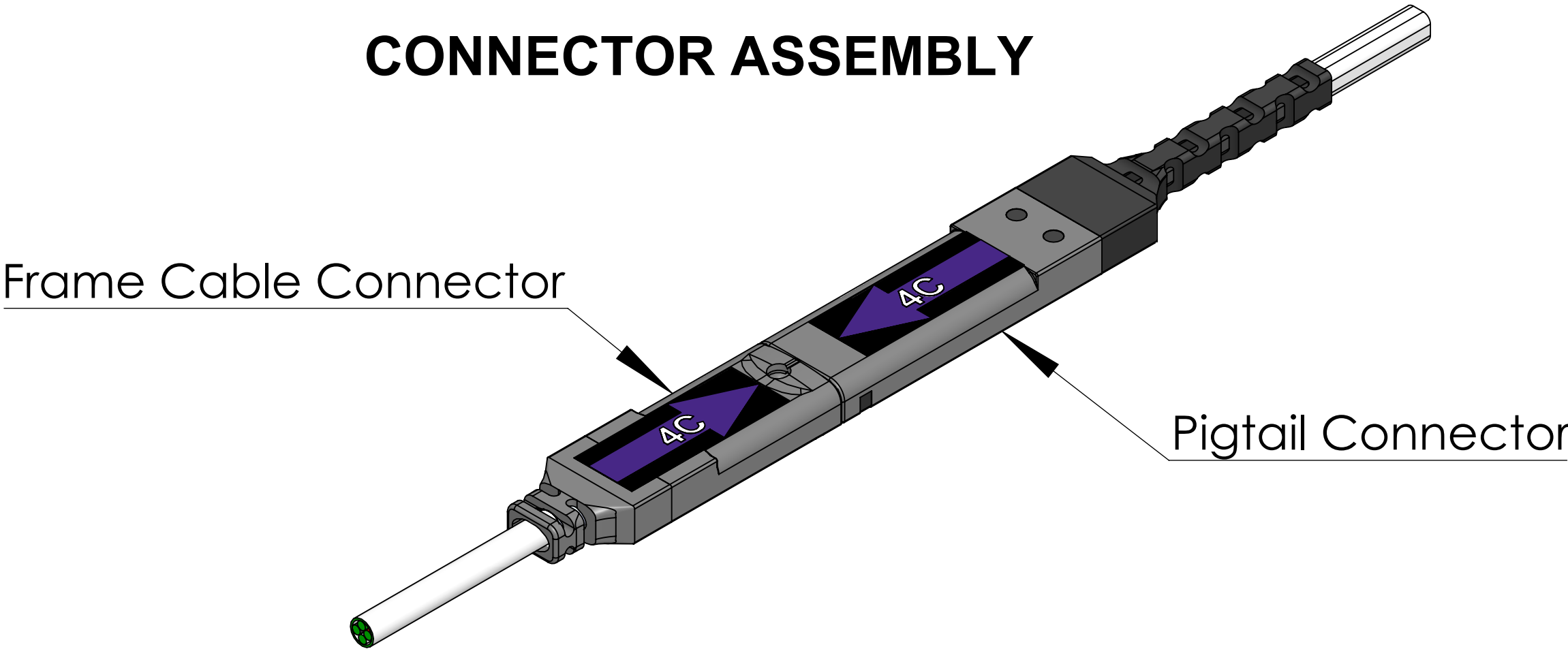


DETAIL A
SCALE 1 : 2



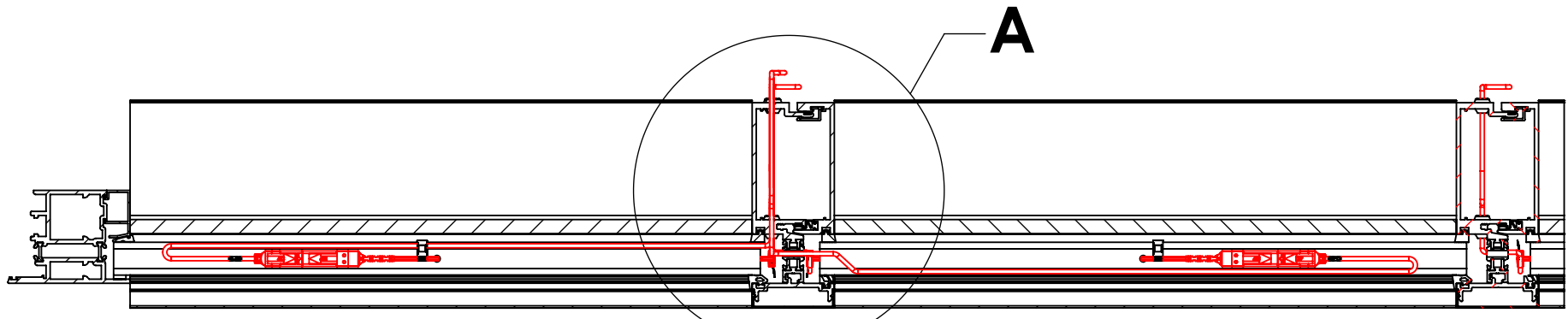
DETAIL B
SCALE 1 : 2

CONNECTOR ASSEMBLY

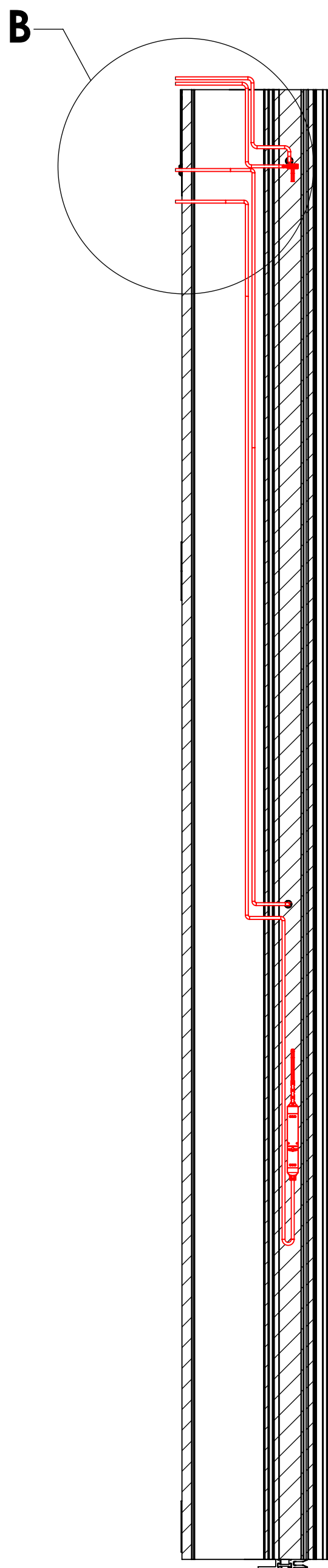


Recommended Steps for Installation:

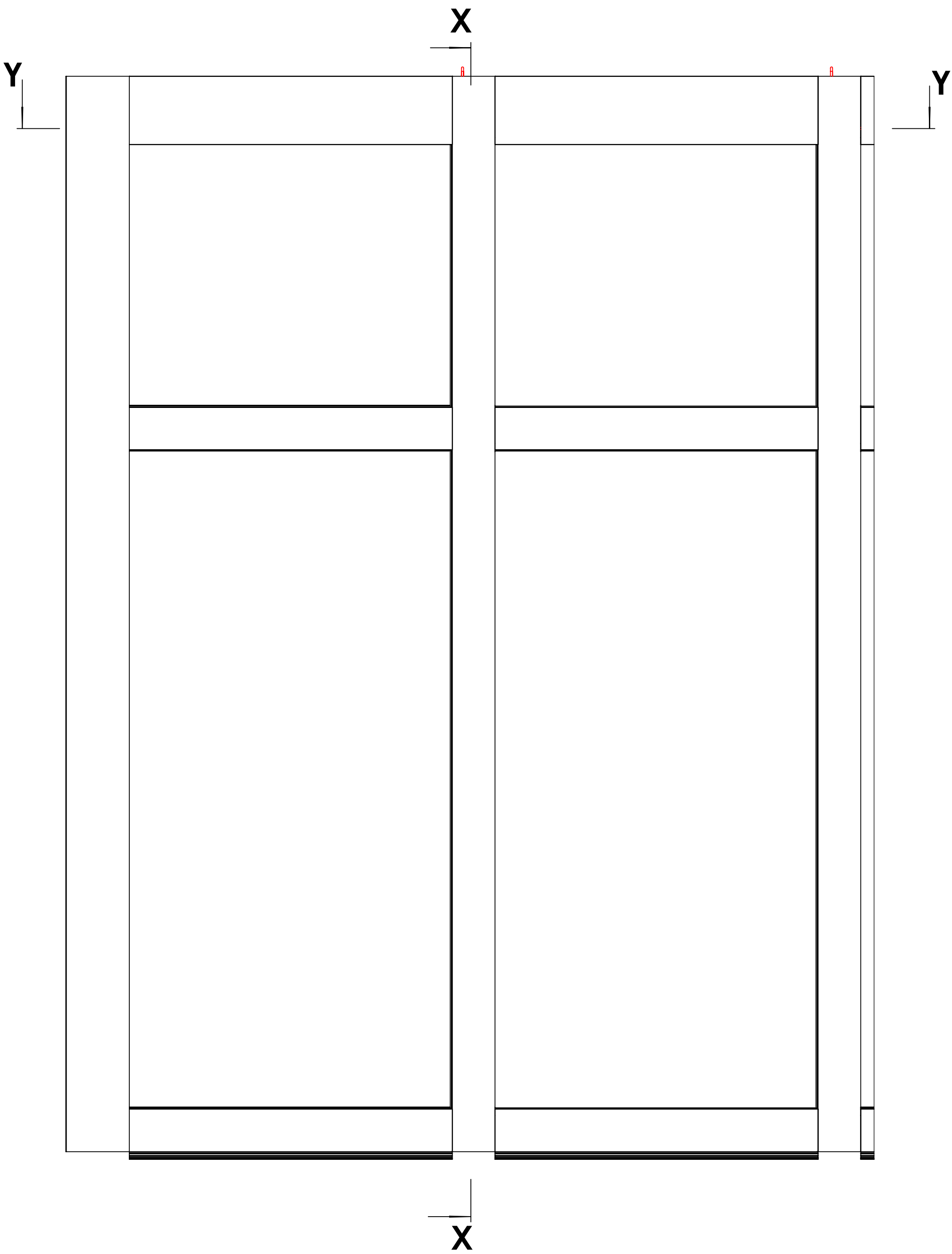
1. Drill 10 mm hole for frame cable grommet.
2. De-bur hole using hand held file.
3. Utilize silicone Dow 795 or similar adhesive to secure grommet in hole.
4. Feed frame cable through the grommeted hole with the connection point remaining in the glazing pocket. (SSG applications may require a cutout slot allowing the connection of the pigtail and frame cable to sit flush and not disrupt the smooth finish of the SSG).
5. If factory glazed, pigtail and frame cable are to be assembled inside the glazing pocket during the factory assembly of IGU and frame cable to be protected during transport and installation at site. Protect pigtail and frame cable at all times.
6. Glazier must label frame cable to match corresponding IGU per wiring daigram. If not enough room inside glazing pocket, bring the pigtail to frame cable connection out to a suitable location.
7. While installing glass, connect the pigtail to the frame cable and create a service loop in the glazing pocket.
8. Finish glazing ensuring none of the wires are pinched or damaged.
9. Cable bundled at the mullion exit to be protected.
10. Use the provided Field Wiring Tester after each frame cable is routed through the frame.
11. This drawing shows frame cable routing options, but other options may work as well or better. Service loop, protecting, testing, and labelling the frame cable is required.



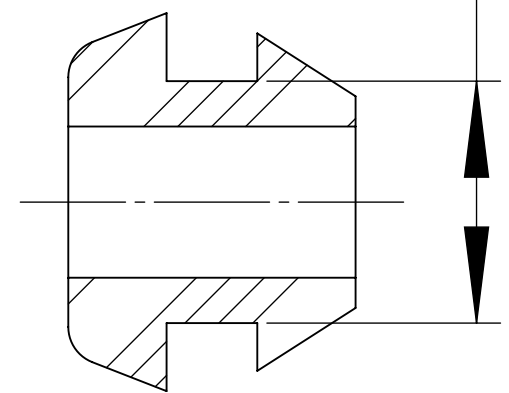
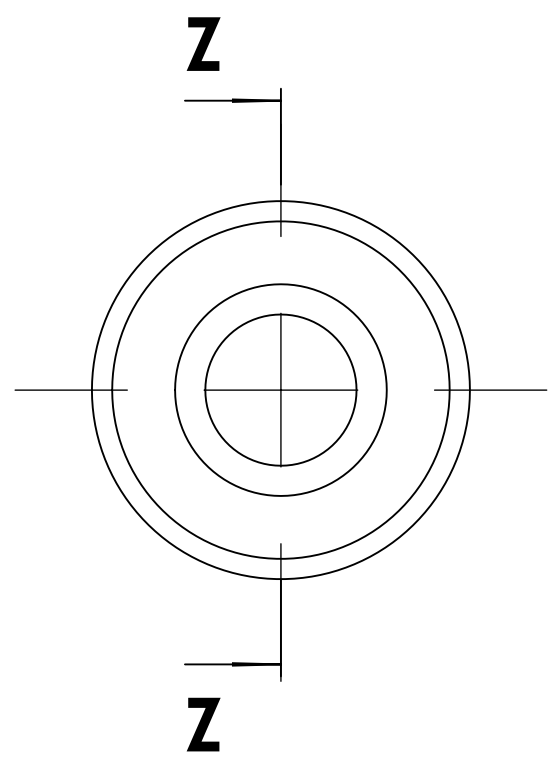
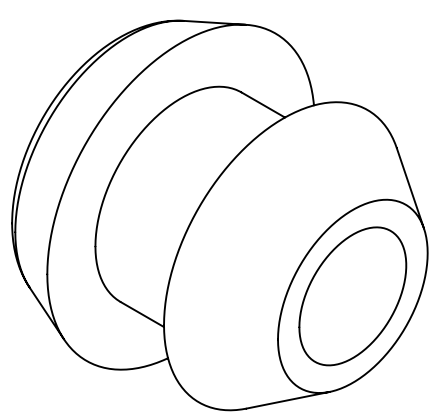
SECTION Y-Y



SECTION X-X



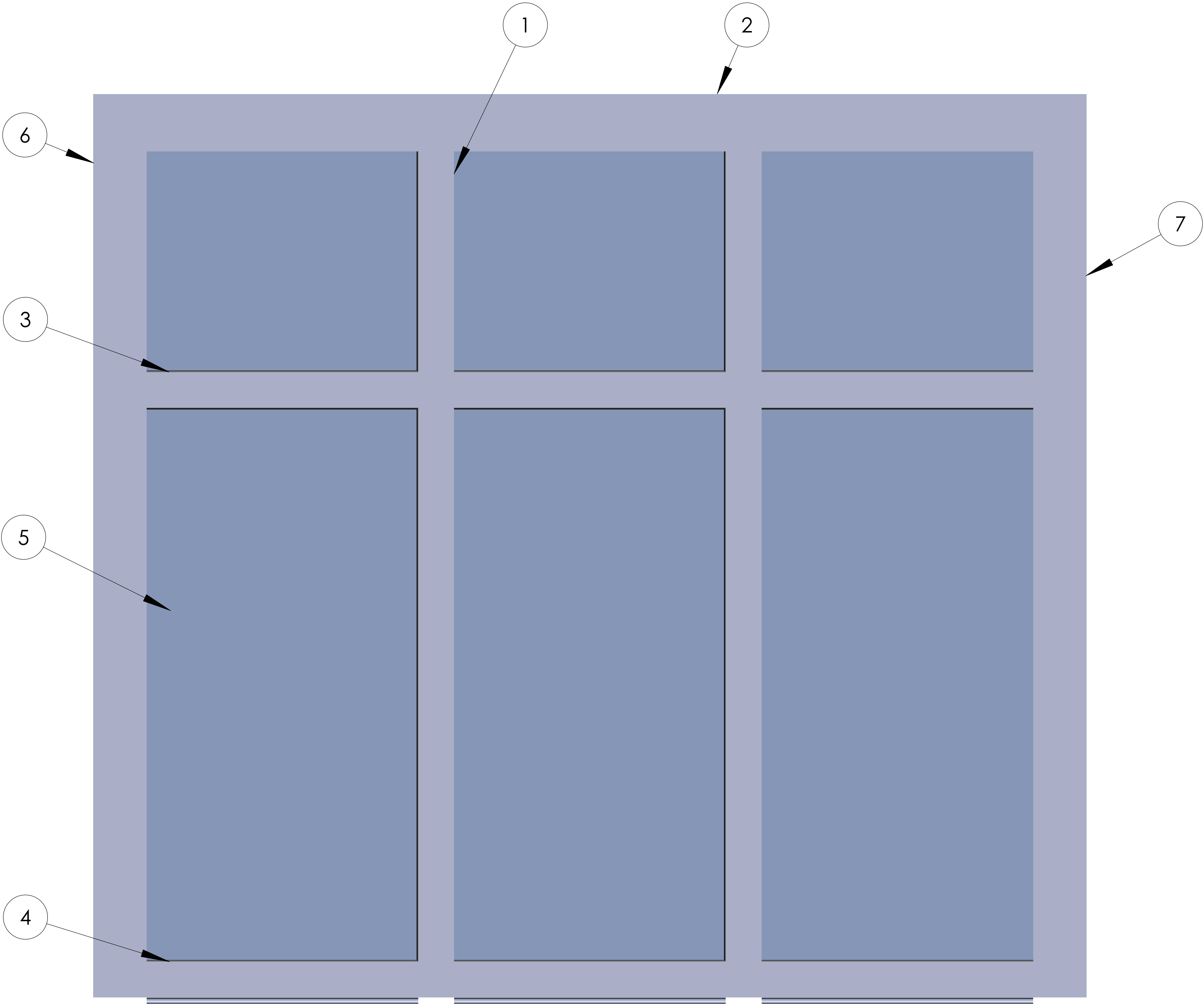
SECTION Z-Z
SCALE 4 : 1




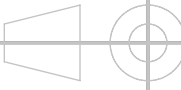
[8.00mm]
Ø .31in

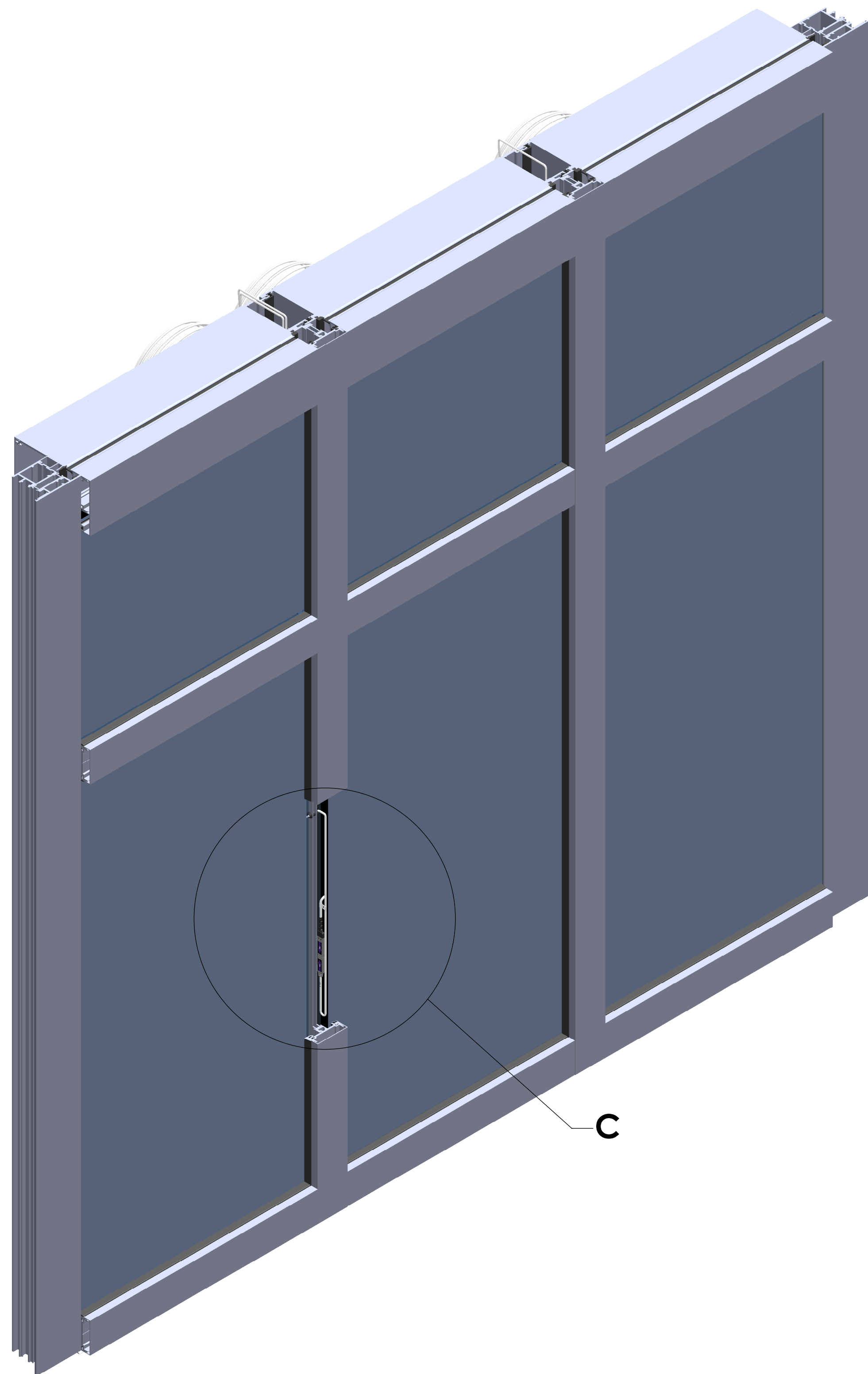
SAGE Electrochromics Inc.		DRAWING SHEET		A1
ALL DIMENSIONS ARE IN "inches"		REVISION		APPROVED BY DATE
DRAWN BY		TSS		
CHECKED BY				
DESCRIPTION :				
Wasusau 6250i				
SCALE: 1:5		DATE : 06-10-2022		SHEET NO 1 OF 7

ASSEMBLED FRAME



- ①-VISION MULLION STACK
- ②-VISION HEAD STARTER
- ③-VISION HORIZONTAL INTERMEDIATE
- ④-VISION AT BASE
- ⑤-SAGEGLASS
- ⑥-LEFT JAMB
- ⑦-RIGHT JAMB

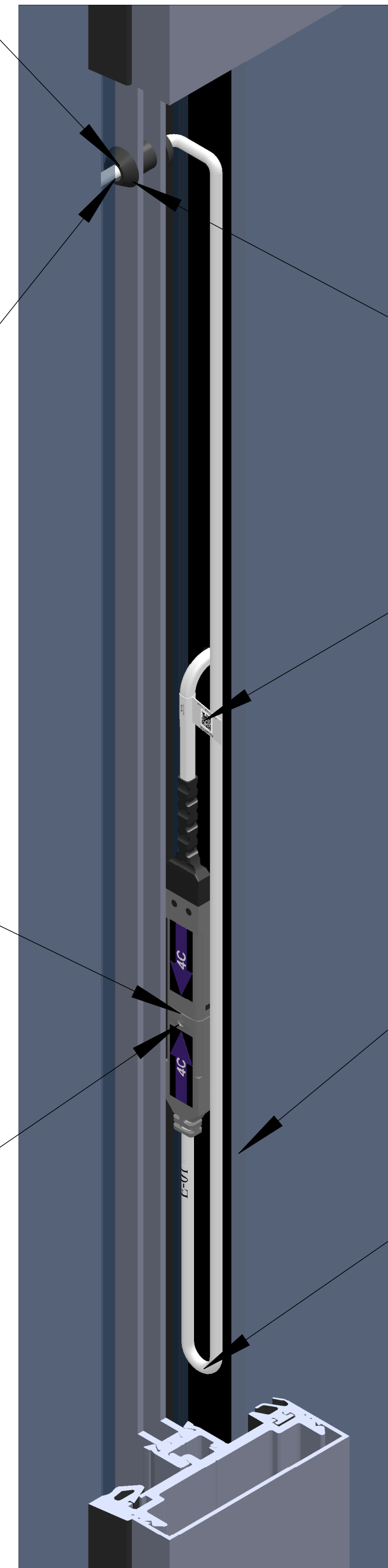
		SAGE Electrochromics Inc.	
		ALL DIMENSIONS ARE IN "Inches"	DRAWING SHEET A1
DRAWN BY	TSS	REVISION	APPROVED BY DATE
CHECKED BY			
DESCRIPTION :			
Wasusau 6250i			
SCALE: 1:5	DATE : 06-10-2022	SHEET NO	2 OF 7



USE APPROPRIATE GROMMET
DESIGN TO FIT FRAME
DIMENSIONS

FRAME CABLE EXITING THE
GLAZING POCKET OF THE
MULLION

CONNECTOR ASSEMBLY
INSIDE GLAZING POCKET OF
VERTICAL MULLION



PIGTAIL LABEL

REFERENCE TAG

SERVICE LOOP

DETAIL C
SCALE 1 : 1

- ⑧ -CONNECTOR ASSEMBLY
⑨ -GROMMET

SAGE Electrochromics Inc.		DRAWING SHEET		A1
ALL DIMENSIONS ARE IN "Inches"		REVISION	APPROVED BY DATE	
DRAWN BY	TSS			
CHECKED BY				
DESCRIPTION :				
Wasusau 6250i				
SCALE: 1:8	DATE : 06-10-2022	SHEET NO	3 OF 7	

CONNECTOR ASSEMBLY - HORIZONTAL MULLION

D

SERVICE LOOP

CONNECTOR ASSEMBLY
INSIDE THE GLAZING
POCKET OF HORIZONTAL
MULLION


8

DETAIL D
SCALE 1.5 : 1

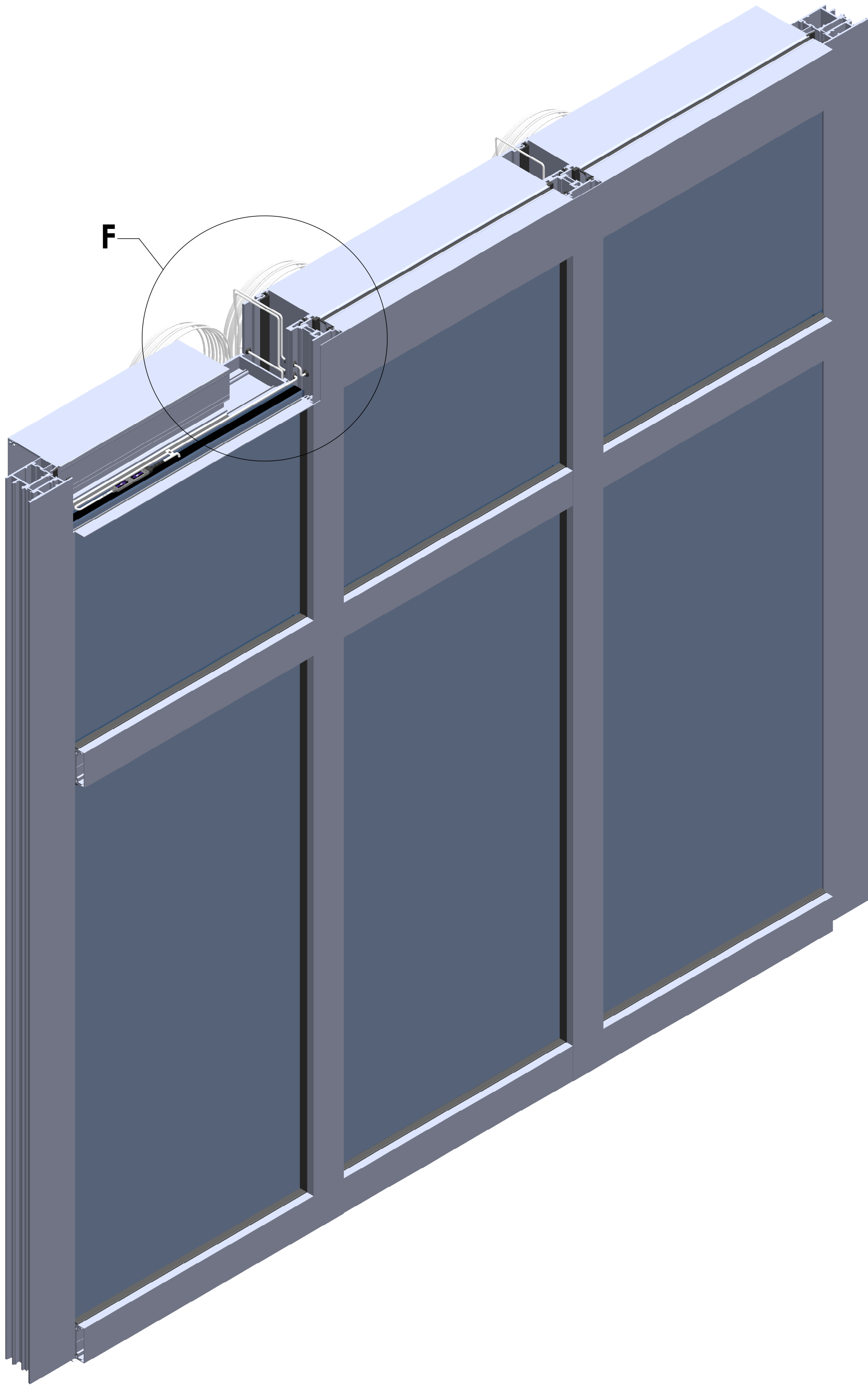
PIGTAIL LABEL

DETAIL E
SCALE 5 : 1

⑧-CONNECTOR ASSEMBLY

		SAGE Electrochromics Inc.	
ALL DIMENSIONS ARE IN "inches"		DRAWING SHEET	A1
DRAWN BY	TSS	REVISION	APPROVED BY DATE
CHECKED BY			
DESCRIPTION :			
Wasusau 6250i			
SCALE: 1:5	DATE : 06-10-2022	SHEET NO	4 OF 7

FRAME CABLE ROUTING




PROTECT FRAME CABLE FROM SHARP EDGE OF MULLION

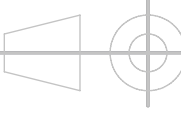
FRAME CABLE MAY EXIT MULLION THROUGH BACK AND OR THROUGH TOP

FRAME CABLES EXITING MULLION

DETAIL F
SCALE 1 : 1

⑨ - GROMMET

**SAGE** Electrochromics Inc.



ALL DIMENSIONS ARE IN "inches"

DRAWN BY

TSS

CHECKED BY

DESCRIPTION :
Wasusau 6250i

SCALE: 1:5

DATE : 06-10-2022

DRAWING SHEET

A1

REVISION

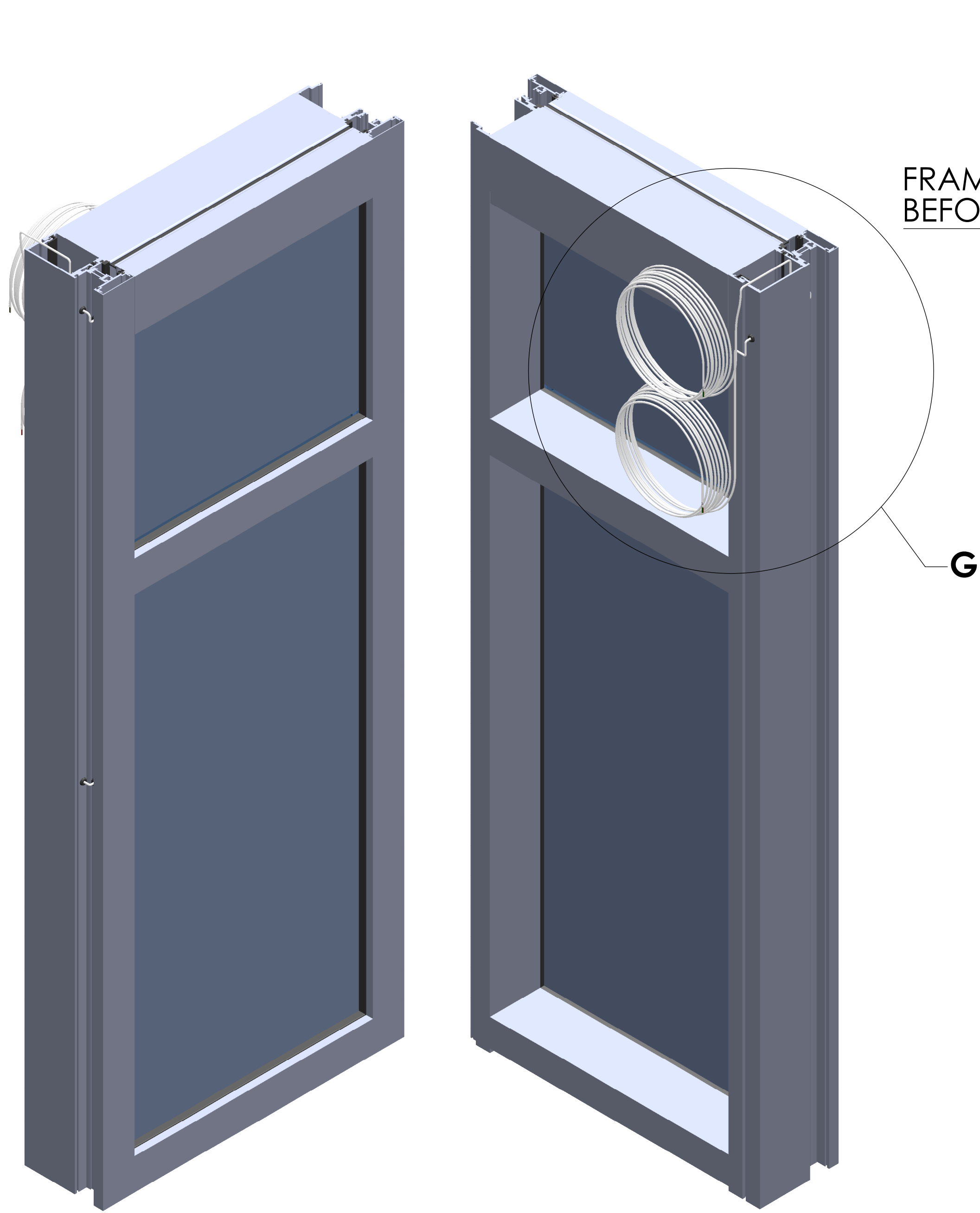
APPROVED BY DATE

THE DRAWING IS THE PROPERTY AND COPYRIGHT OF SAGE ELECTROCHROMICS INC. REPRODUCTION OR USE WITHOUT WRITTEN CONSENT IS PROHIBITED. DO NOT SCALE THE DRAWING.

SHEET NO

5 OF 7

FACTORY GLAZED FRAME and REF TAGS



FRAME CABLES COILED, SECURED AND PROTECTED
BEFORE AND DURING TRANSPORTATION TO SITE


FRAME CABLE MAY EXIT MULLION
THROUGH BACK AND OR THROUGH TOP

PROTECT FRAME CABLE FROM
SHARP EDGE OF MULLION

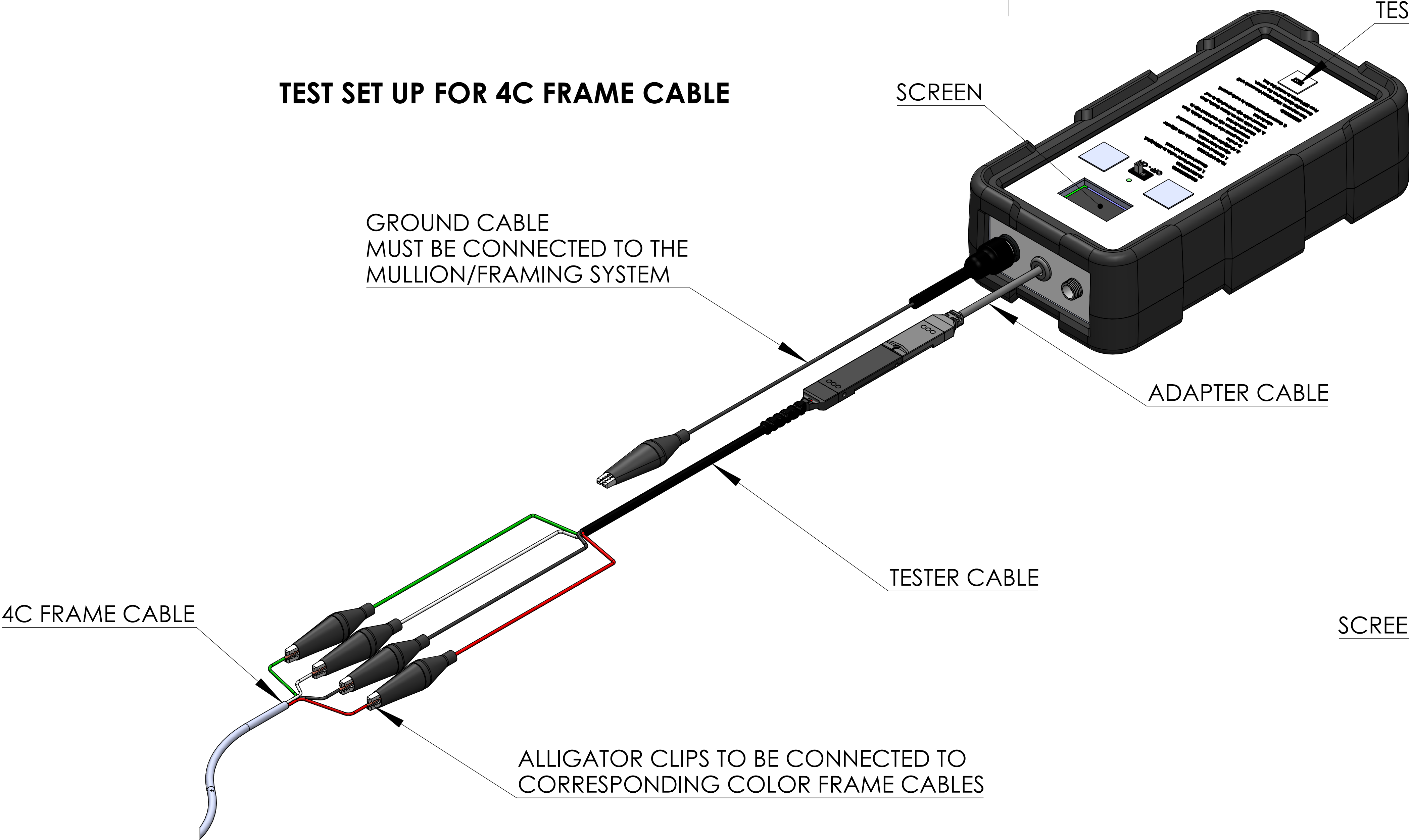
REFERENCE TAGS

DETAIL G
SCALE 1 : 2

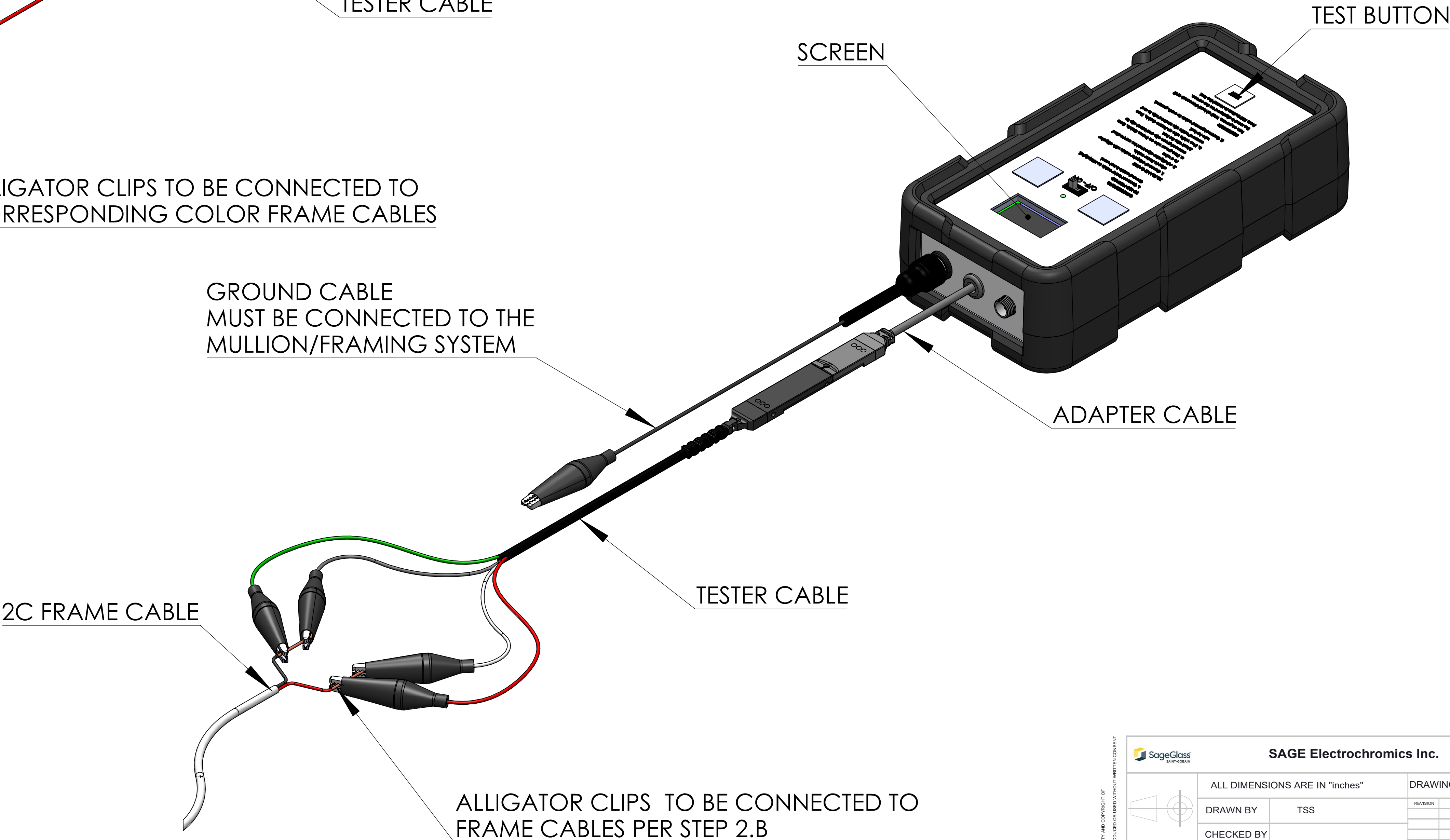
9 - GROMMET

		SAGE Electrochromics Inc.	
ALL DIMENSIONS ARE IN "Inches"		DRAWING SHEET	A1
DRAWN BY	TSS	REVISION	APPROVED BY DATE
CHECKED BY			
DESCRIPTION :			
Wasusau 6250i			
SCALE: 1:5	DATE : 06-10-2022	SHEET NO	6 OF 7

TEST SET UP FOR 4C FRAME CABLE



TEST SET UP FOR 2C FRAME CABLE



CONNECTIONS:

TO FRAME CABLE:

1. Connect adapter cable with alligator clips to tester cable.
2. All alligator clips must be connected to a wire:
 - a. If 4-Conductor frame cable, connect each alligator clip to the corresponding frame cable wire.
 - b. If 2-Conductor frame cable, connect red and white alligator clips to red frame cable wire and black and green alligator clips to black frame cable wire.

3. Connect ground cable to earth ground. (mullion / framing system)



TO IGU PIGTAILS:

1. Connect tester cable to IGU pigtail. Ground cable is not used.

DIRECTIONS:

Turn on power. Wait at least 5 seconds until the result is displayed on the screen. Press TEST button to restart the test.

IT SHALL NOT BE COPIED, REPRODUCED OR USED WITHOUT WRITTEN CONSENT.
DO NOT SCALE THE DRAWING.

		SAGE Electrochromics Inc.		
	ALL DIMENSIONS ARE IN "inches"		DRAWING SHEET	A1
	DRAWN BY	TSS	REVISION	APPROVED BY DATE
	CHECKED BY			
	DESCRIPTION :			
Wasusau 6250i				
SCALE: 1:1		DATE : 06-10-2022		SHEET NO 7 OF 7