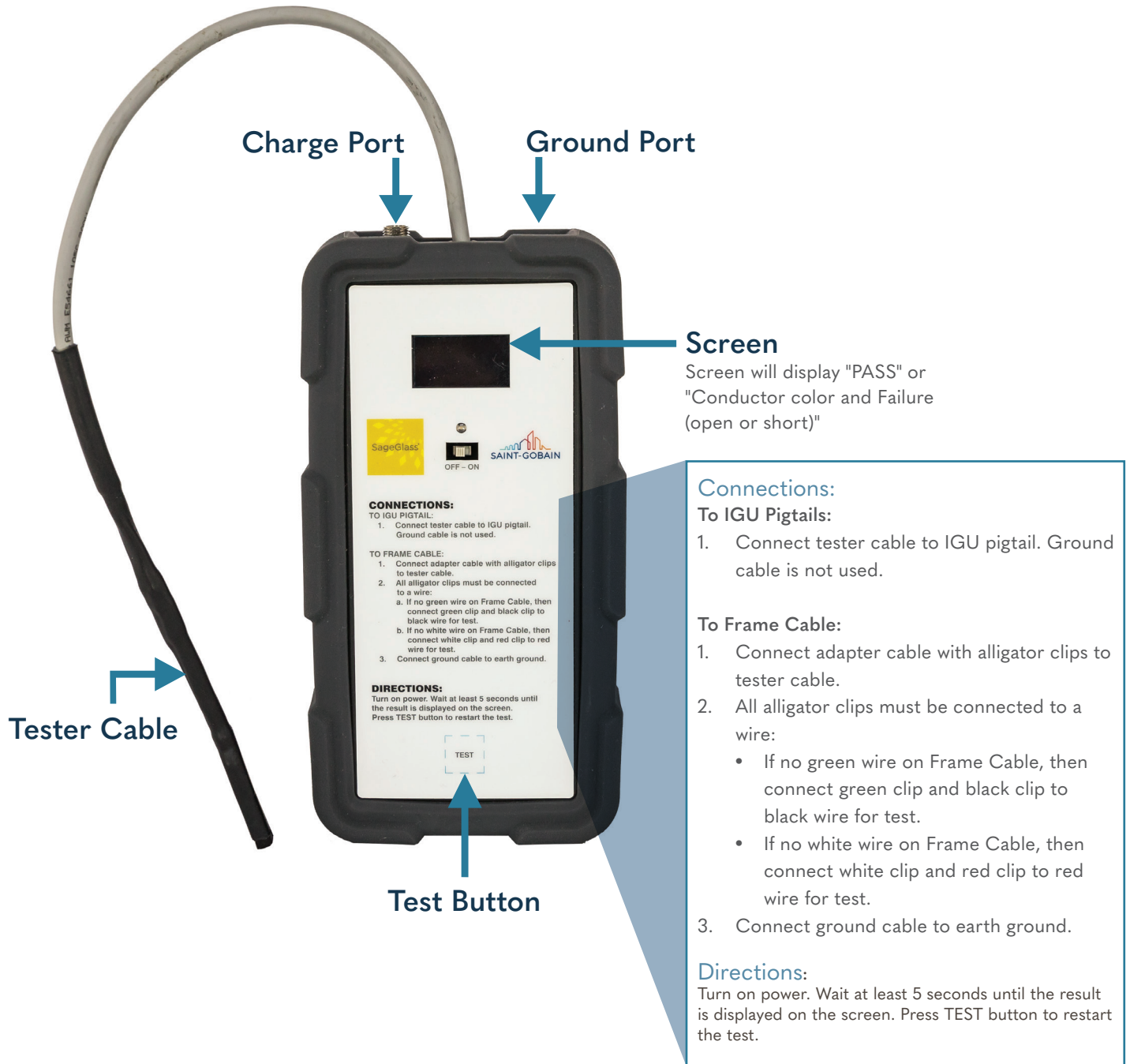


Product Sheet: Field Wiring Tester

The SageGlass Field Wiring Tester is a tool for glaziers and electricians to test the Frame Cable running from the IGU to the Control Panel or Terminal Box. The Field Wiring Tester will check for opens, internal conductor shorts, and shorts to earth ground.



Pre-Test Check List

- Frame Cable can be tested only when an IGU or IGU simulator is connected. IGU simulator may be ordered separately if needed.
- IGU must not be tinted even partially during the test.

Ground Connection

- When testing Frame Cable near Glazing System Frame (GSF) ground connection shall be connected to GSF.
- When testing Frame Cable near SageGlass control panel ground connection shall be connected to earth ground.

Charging & Battery Life

The Field Wiring Tester runs off of a rechargeable battery. If the screen display has a "Low Battery" message the unit must be charged. Only use the provided charger to charge the unit. The unit may be used while charging.

Cable Accessories

Adapter Cable



Ground Cable



Charging Cable



IGU Simulator
(optional)

