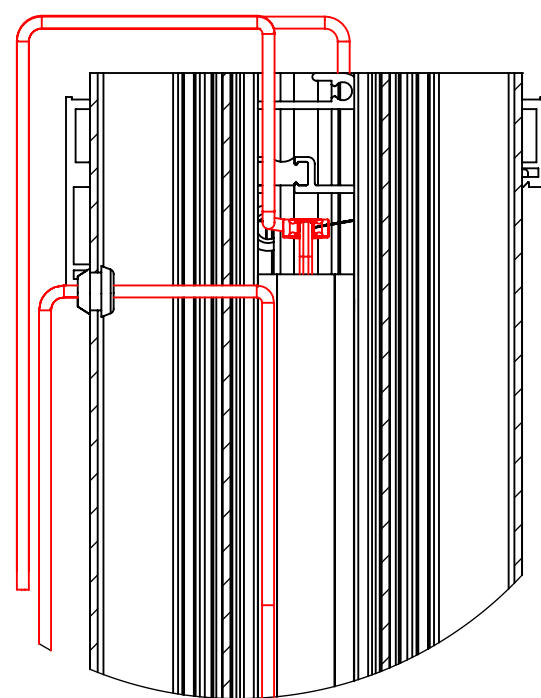
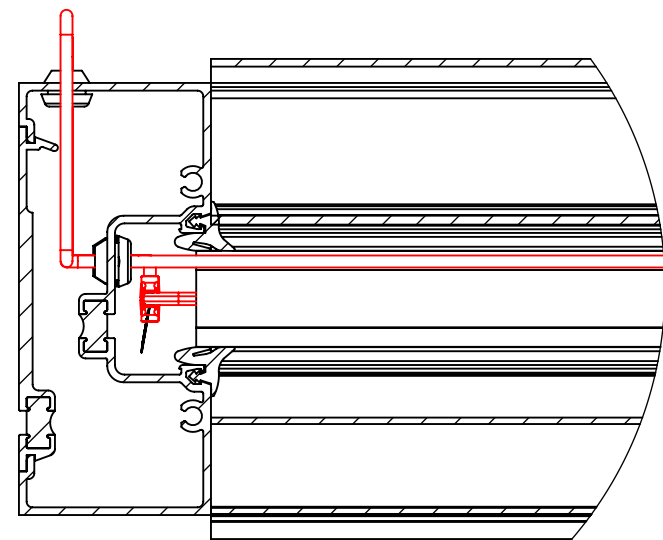


OVERVIEW



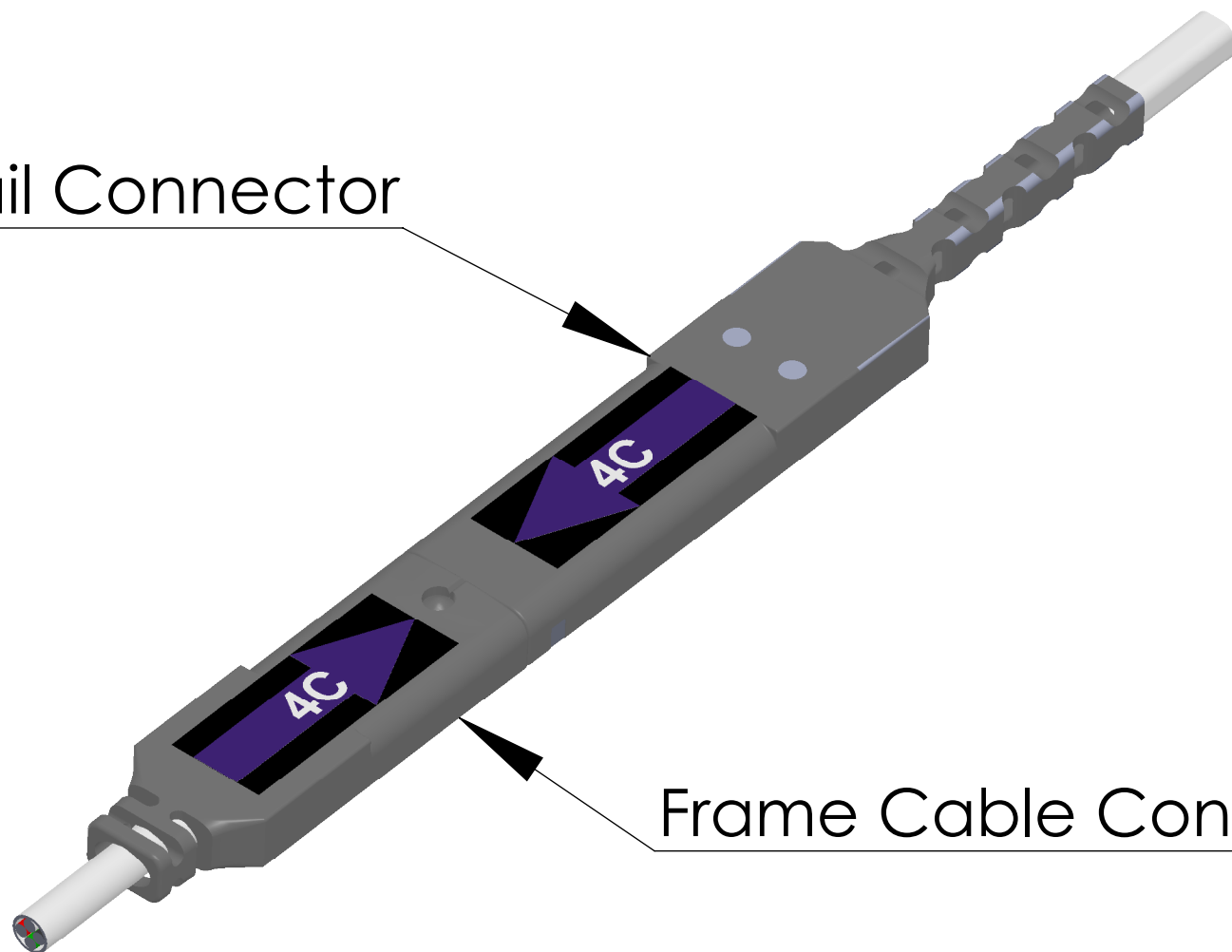
DETAIL B
SCALE 1 : 2



DETAIL A
SCALE 1 : 2

Connector Assembly

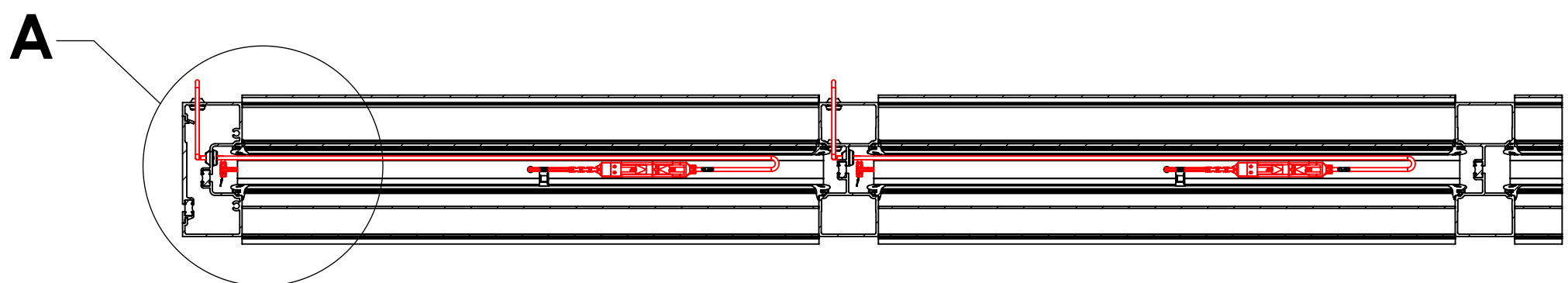
Pigtail Connector



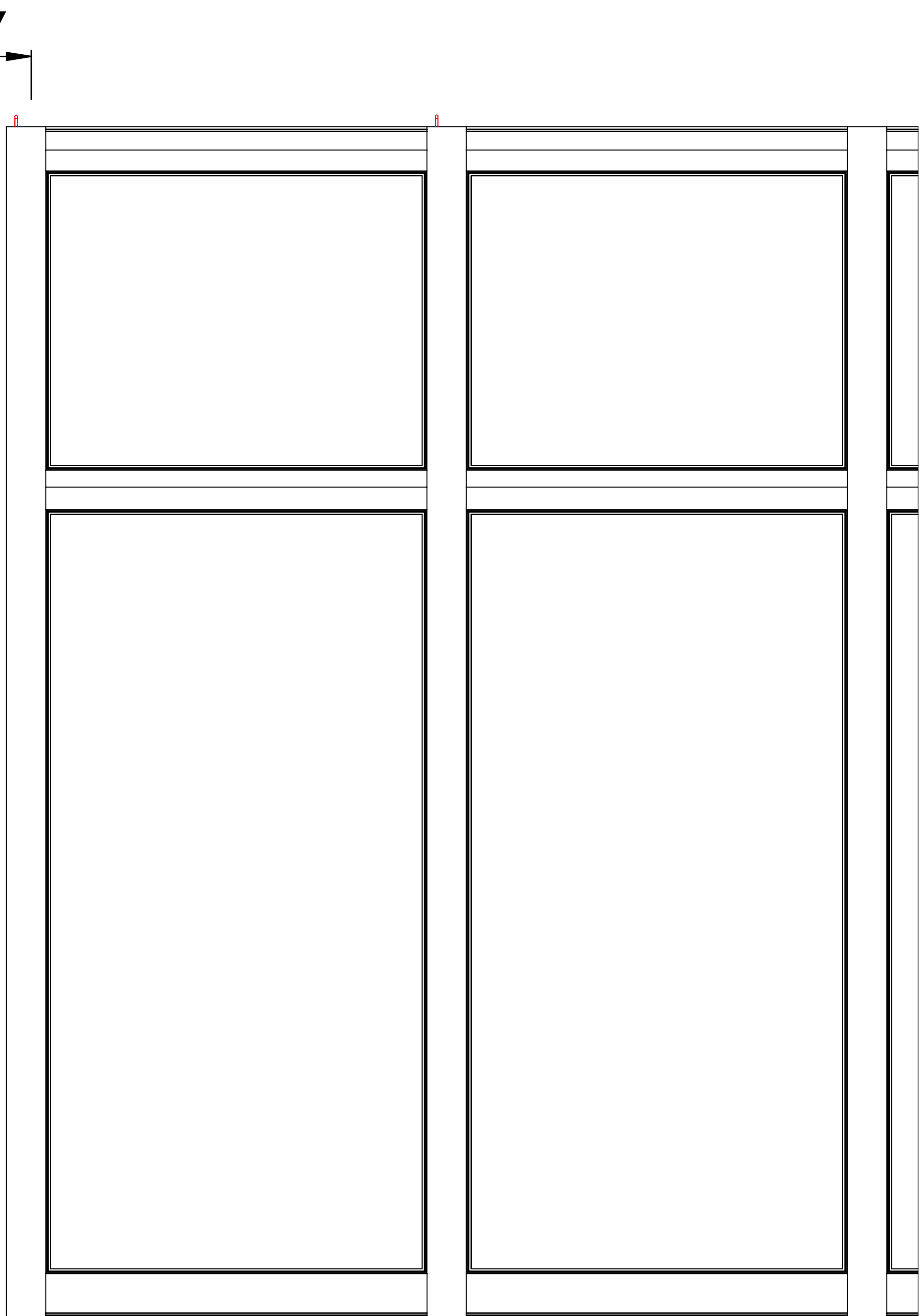
Frame Cable Connector

Recommended Steps for Installation:

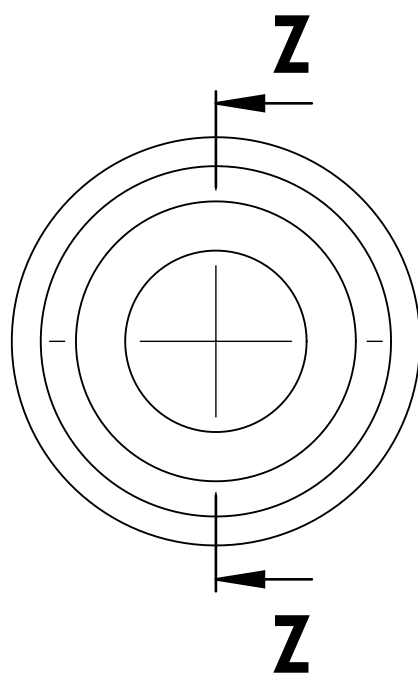
1. Drill 10 mm hole for frame cable grommet.
2. De-bur hole using hand held file.
3. Utilize silicone Dow 795 or similar adhesive to secure grommet in hole.
4. Feed frame cable through the grommeted hole with the connection point remaining in the glazing pocket. (SSG applications may require a cutout slot allowing the connection of the pigtail and frame cable to sit flush and not disrupt the smooth finish of the SSG).
5. If factory glazed, pigtail and frame cable are to be assembled inside the glazing pocket during the factory assembly of IGU and frame cable to be protected during transport and installation at site. Protect pigtail and frame cable at all times.
6. Glazier must label frame cable to match corresponding IGU per wiring diagram. If not enough room inside glazing pocket, bring the pigtail to frame cable connection out to a suitable location.
7. While installing glass, connect the pigtail to the frame cable and create a service loop in the glazing pocket.
8. Finish glazing ensuring none of the wires are pinched or damaged.
9. Cable bundled at the mullion exit to be protected.
10. Use the provided Field Wiring Tester after each frame cable is routed through the frame.
11. This drawing shows frame cable routing options, but other options may work as well or better. Service loop, protecting, testing, and labelling the frame cable is required.



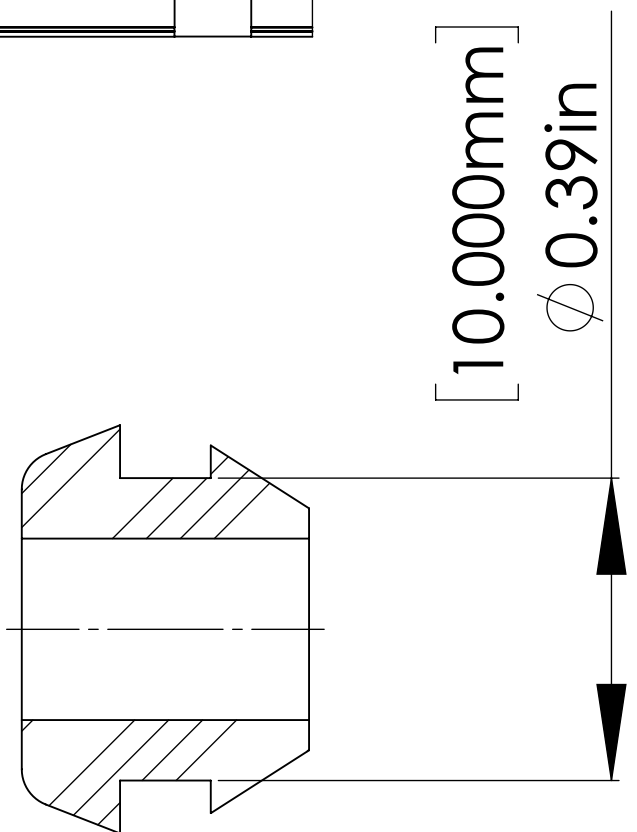
SECTION X-X





SECTION Y-Y

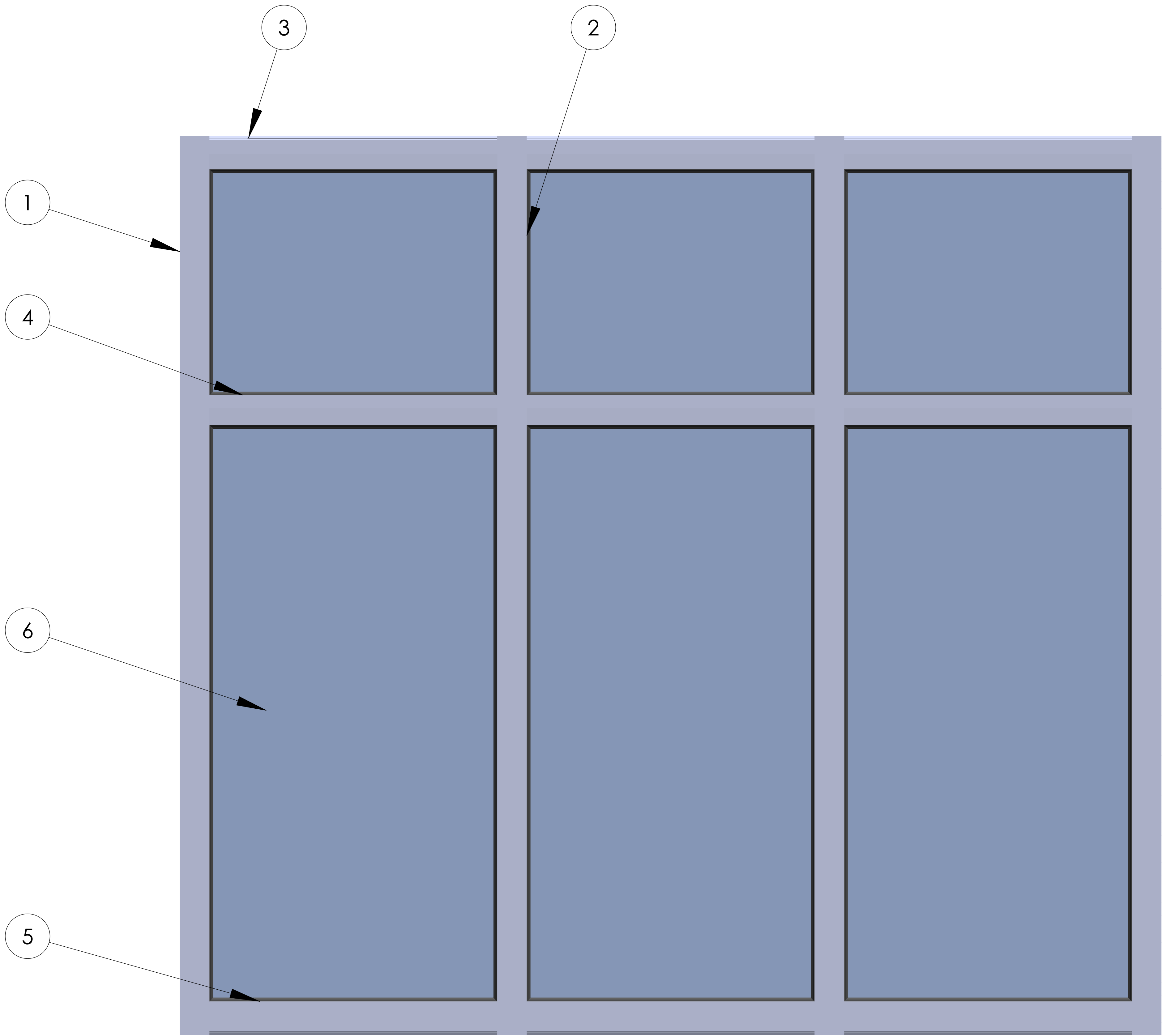


SECTION Z-Z
SCALE 4 : 1


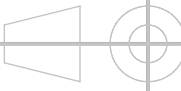


		SAGE Electrochromics Inc.		
	ALL DIMENSIONS ARE IN "Inches"		DRAWING SHEET	A1
	DRAWN BY	TSS	REVISION	APPROVED BY DATE
	CHECKED BY			
	DESCRIPTION :			
	Kawneer 451T			
SCALE: 1:8		DATE : 09-12-2022	SHEET NO	1 OF 7

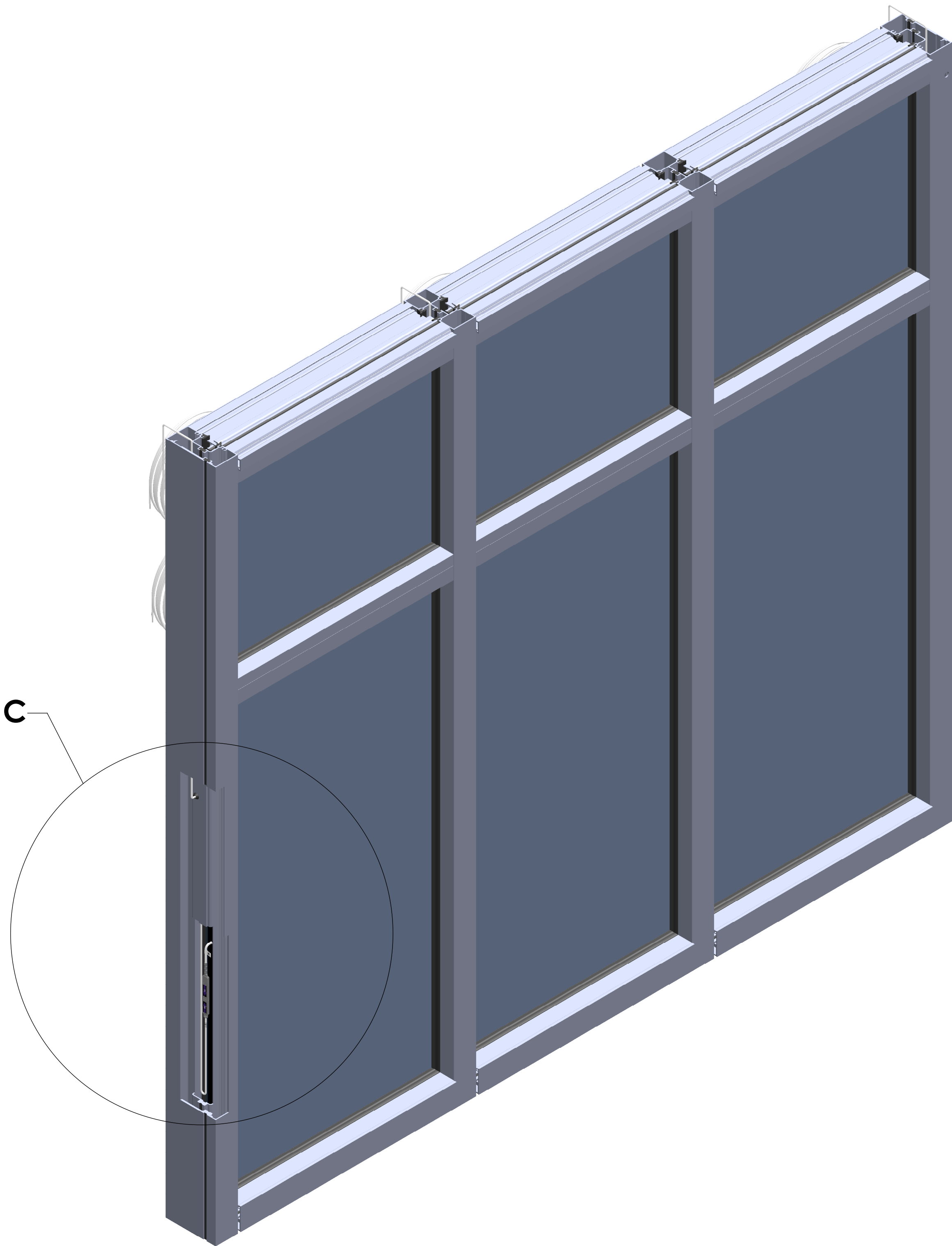
ASSEMBLED FRAME



- 1 - JAMB
- 2 - STANDARD VERTICAL MULLION
- 3 - HEAD
- 4 - SILL
- 5 - HORIZONTAL
- 6 - SAGE GLASS

		SAGE Electrochromics Inc.	
	ALL DIMENSIONS ARE IN "Inches"		DRAWING SHEET
	DRAWN BY TSS		A1
	CHECKED BY		
	DESCRIPTION :		
Kawneer 451T			
SCALE: 1:8		DATE : 09-12-2022	
2		1	
		SHEET NO 2 OF 7	

CONNECTOR ASSEMBLY - VERTICAL MULLION



FRAME CABLE EXITING THE GLAZING POCKET OF THE MULLION

SERVICE LOOP



PIGTAIL LABEL

CONNECTOR ASSEMBLY INSIDE GLAZING POCKET OF VERTICAL MULLION

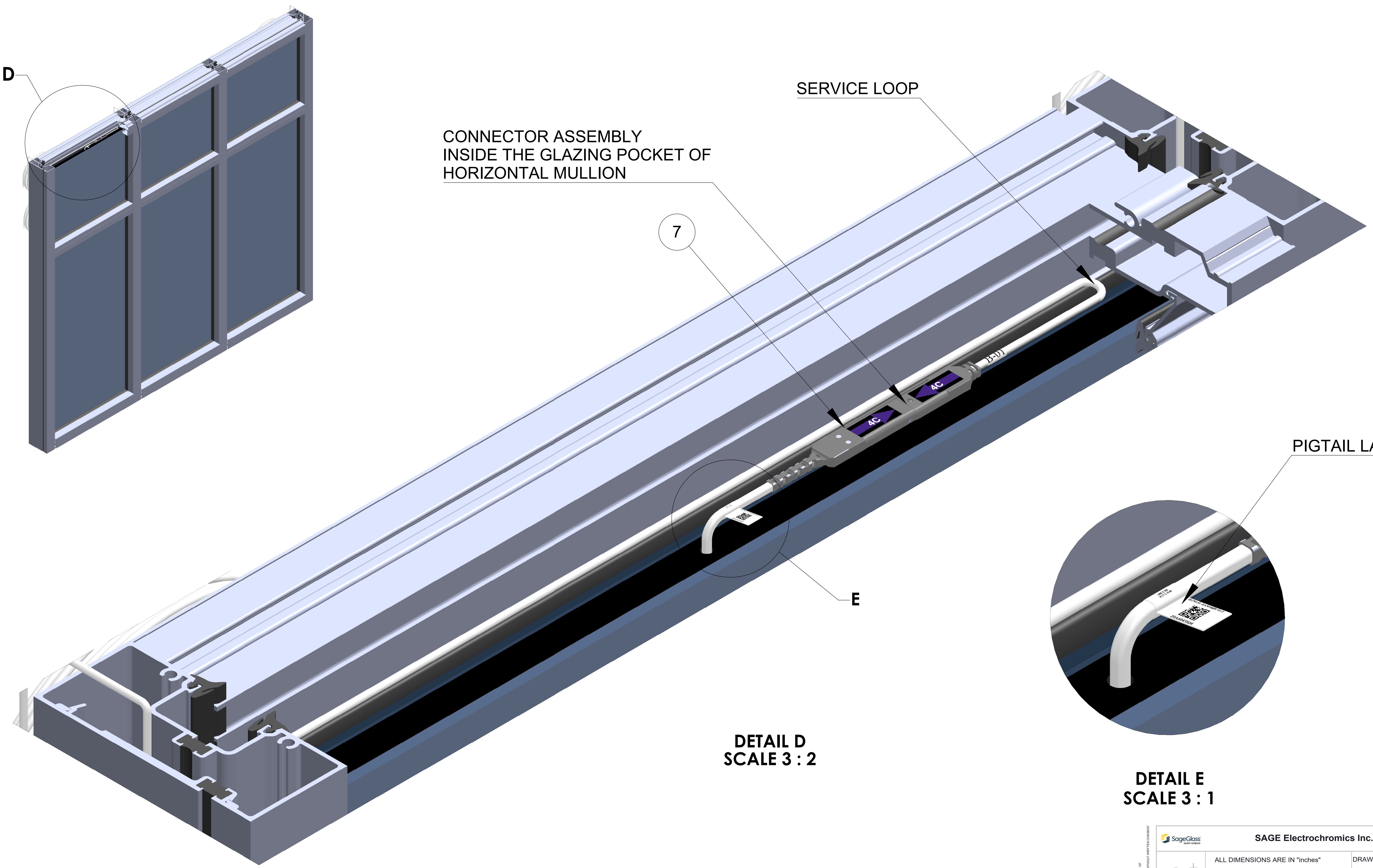
REFERENCE TAG

DETAIL C
SCALE 2 : 3

- 7 - CONNECTOR ASSEMBLY
- 8 - GROMMET

SAGE Electrochromics Inc.		DRAWING SHEET		A1
ALL DIMENSIONS ARE IN "Inches"		REVISION	APPROVED BY DATE:	
DRAWN BY	TSS			
CHECKED BY				
DESCRIPTION :				
Kawneer 451T				
SCALE: 1:10	DATE : 09-12-2022	SHEET NO	3 OF 7	

CONNECTOR ASSEMBLY - HORIZONTAL MULLION



CONNECTOR ASSEMBLY
INSIDE THE GLAZING POCKET OF
HORIZONTAL MULLION

SERVICE LOOP

7


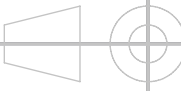
E

PIGTAIL LABEL

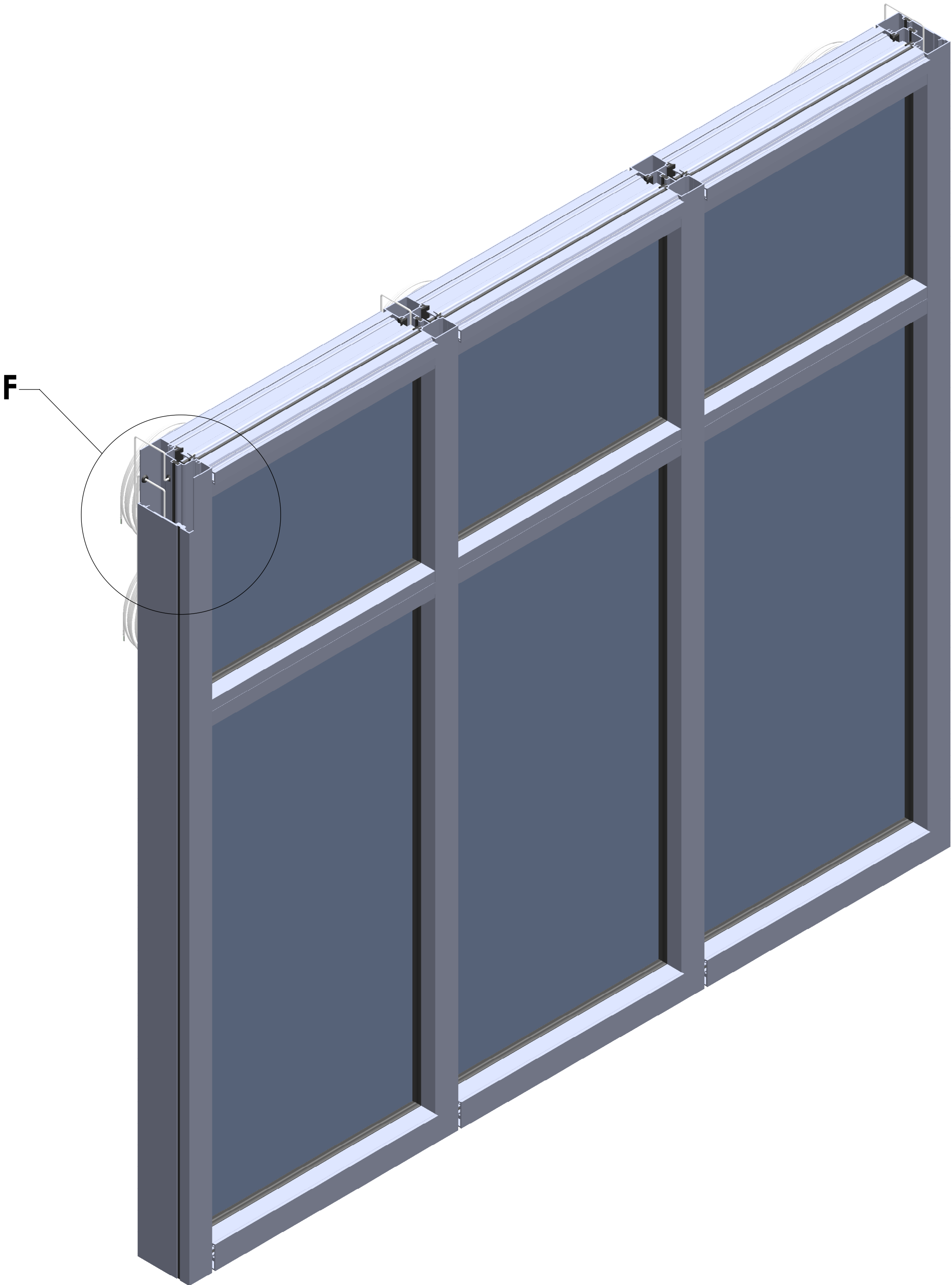
DETAIL D
SCALE 3 : 2

DETAIL E
SCALE 3 : 1

7 - CONNECTOR ASSEMBLY

		SAGE Electrochromics Inc.	
		ALL DIMENSIONS ARE IN "inches"	DRAWING SHEET A1
DRAWN BY	TSS	REVISION	APPROVED BY DATE
CHECKED BY			
DESCRIPTION :			
Kawneer 451T			
SCALE: 1:8	DATE : 09-12-2022	SHEET NO	4 OF 7

FRAME CABLE ROUTING

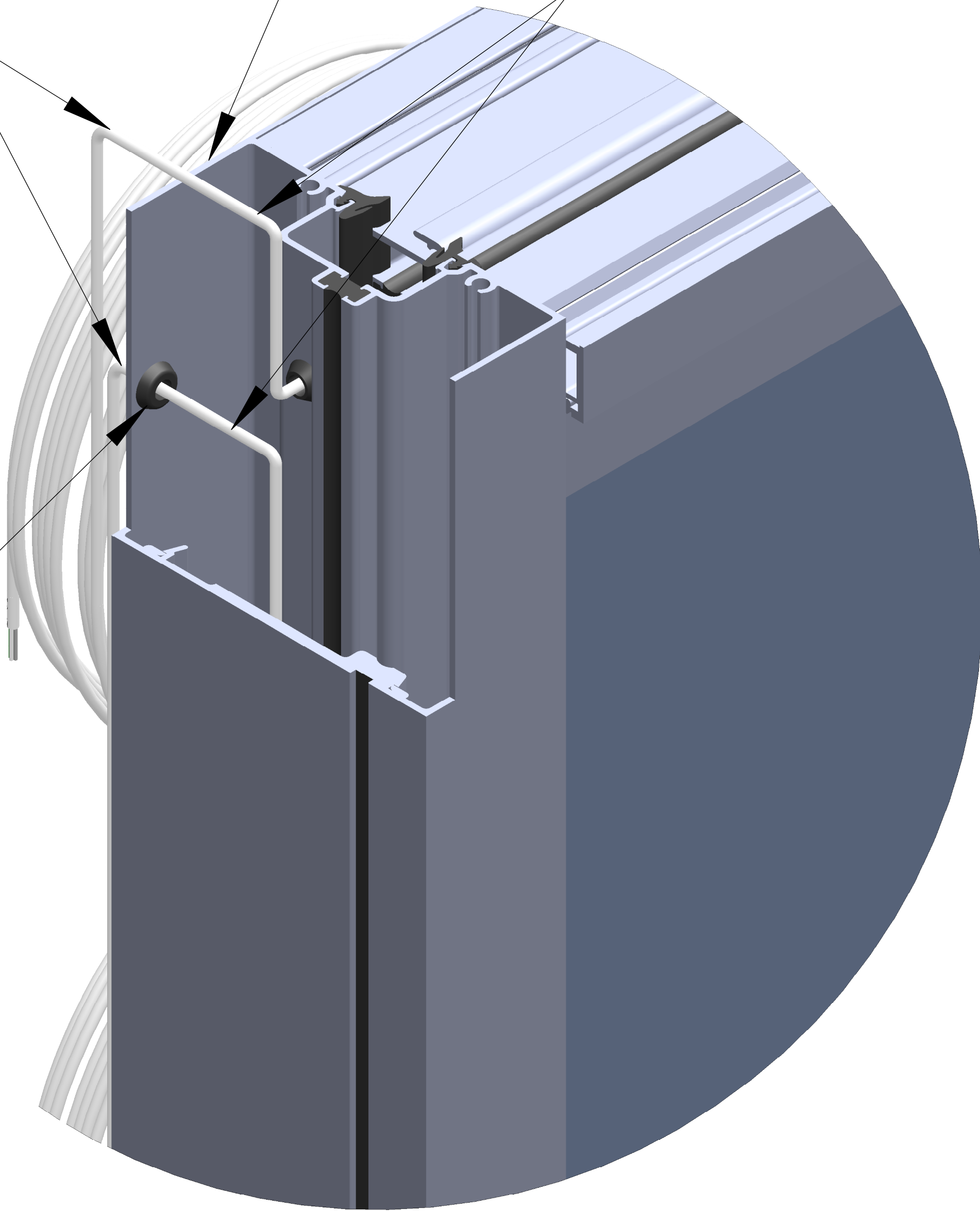


FRAME CABLE MAY EXIT
MULLION THROUGH BACK
AND OR THROUGH TOP

PROTECT FRAME CABLE FROM
SHARP EDGE OF MULLION


FRAME CABLES
EXITING MULLION

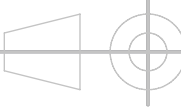
8



DETAIL F
SCALE 1 : 1

8-GROMMET

**SAGE Electrochromics Inc.**



ALL DIMENSIONS ARE IN "Inches"

DRAWN BY	TSS	REVISION	APPROVED BY DATE
CHECKED BY			

DESCRIPTION :

Kawneer 451T

SCALE: 1:10

DATE : 09-12-2022

DRAWING SHEET

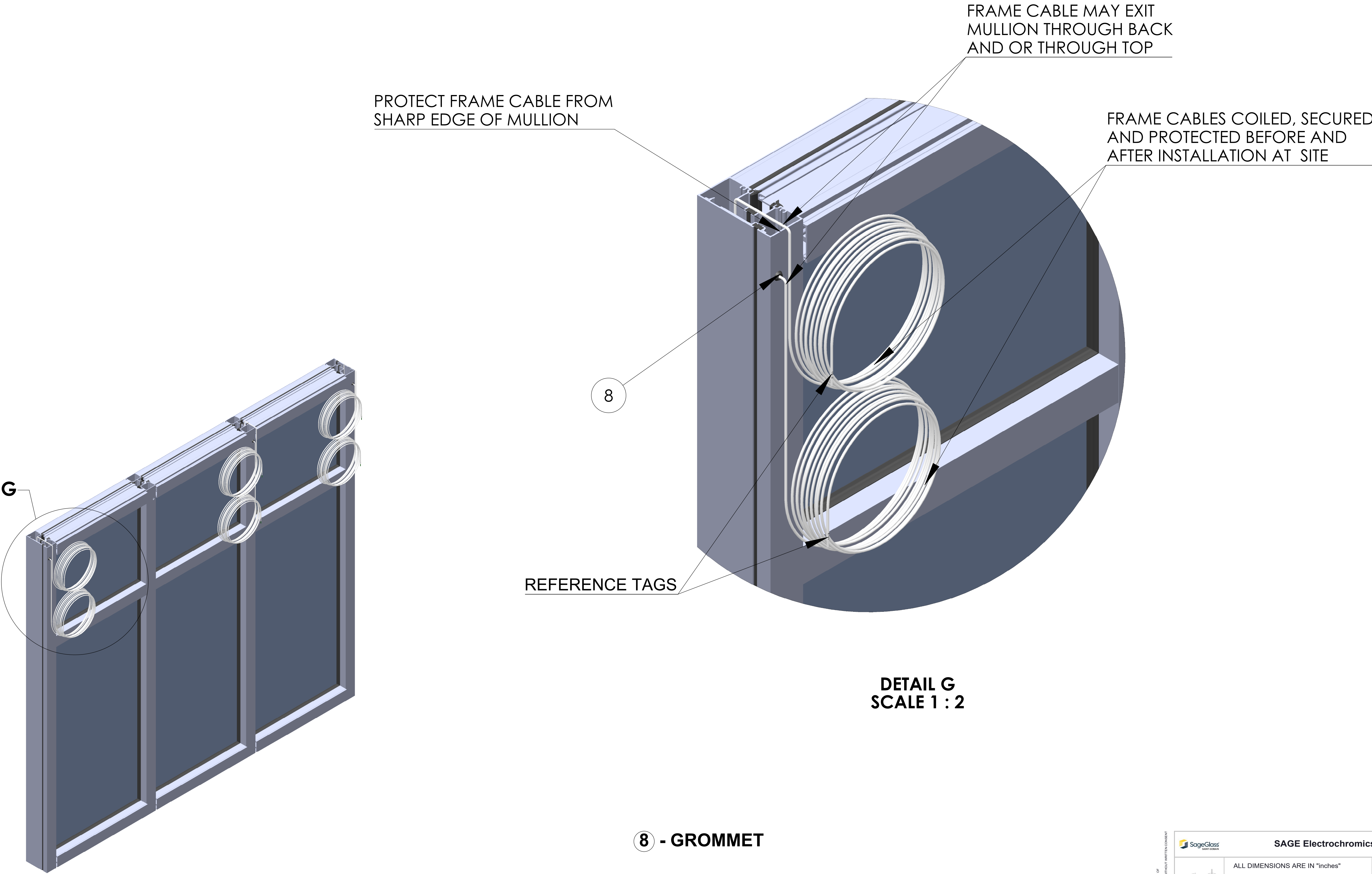
A1

SHEET NO

5 OF 7

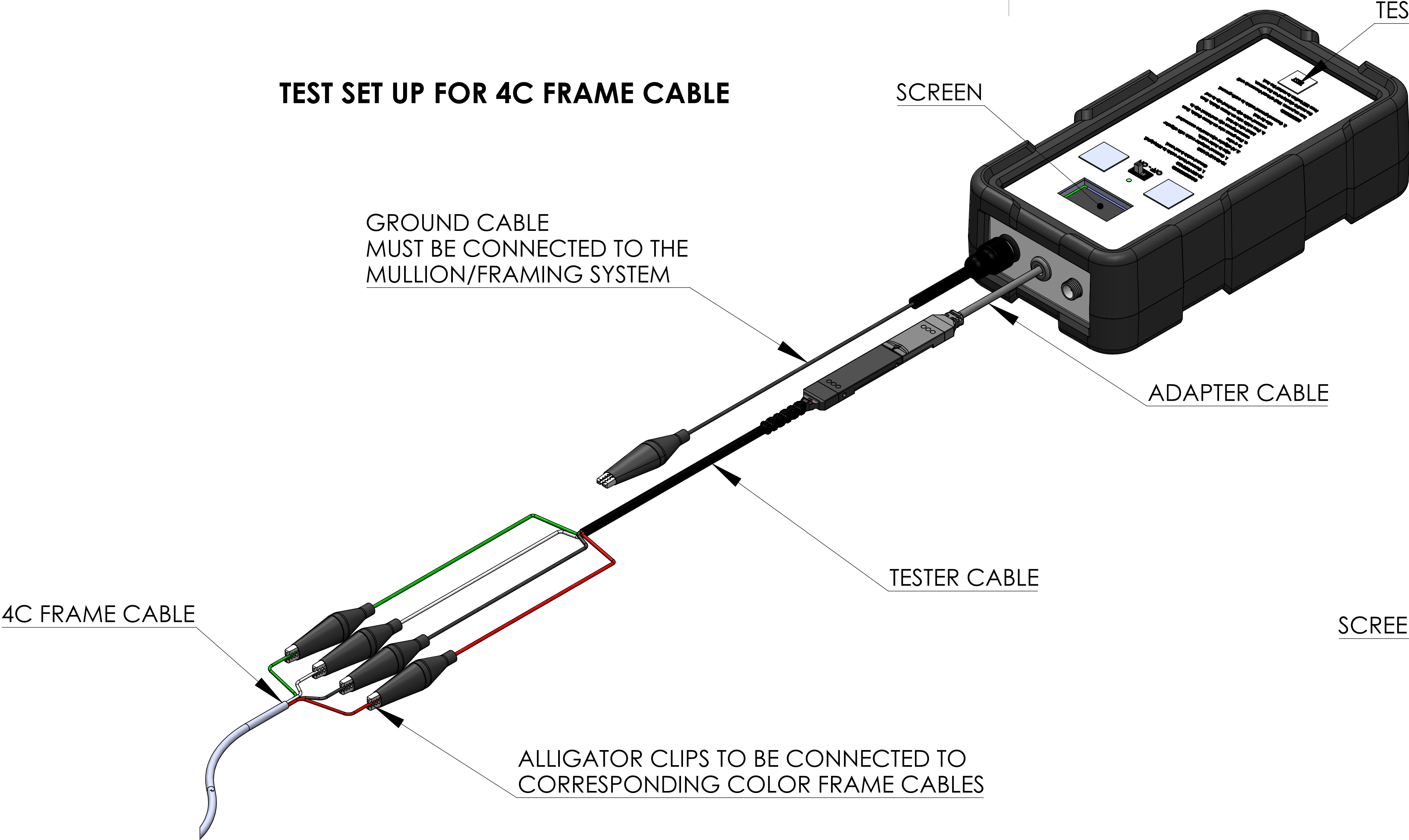
THIS DRAWING IS THE PROPERTY AND COPYRIGHT OF SAGE ELECTROCHROMICS INC. REPRODUCTION OR USE WITHOUT WRITTEN CONSENT OF SAGE ELECTROCHROMICS INC. IS PROHIBITED.

SITE INSTALLED FRAME AND REF TAGS

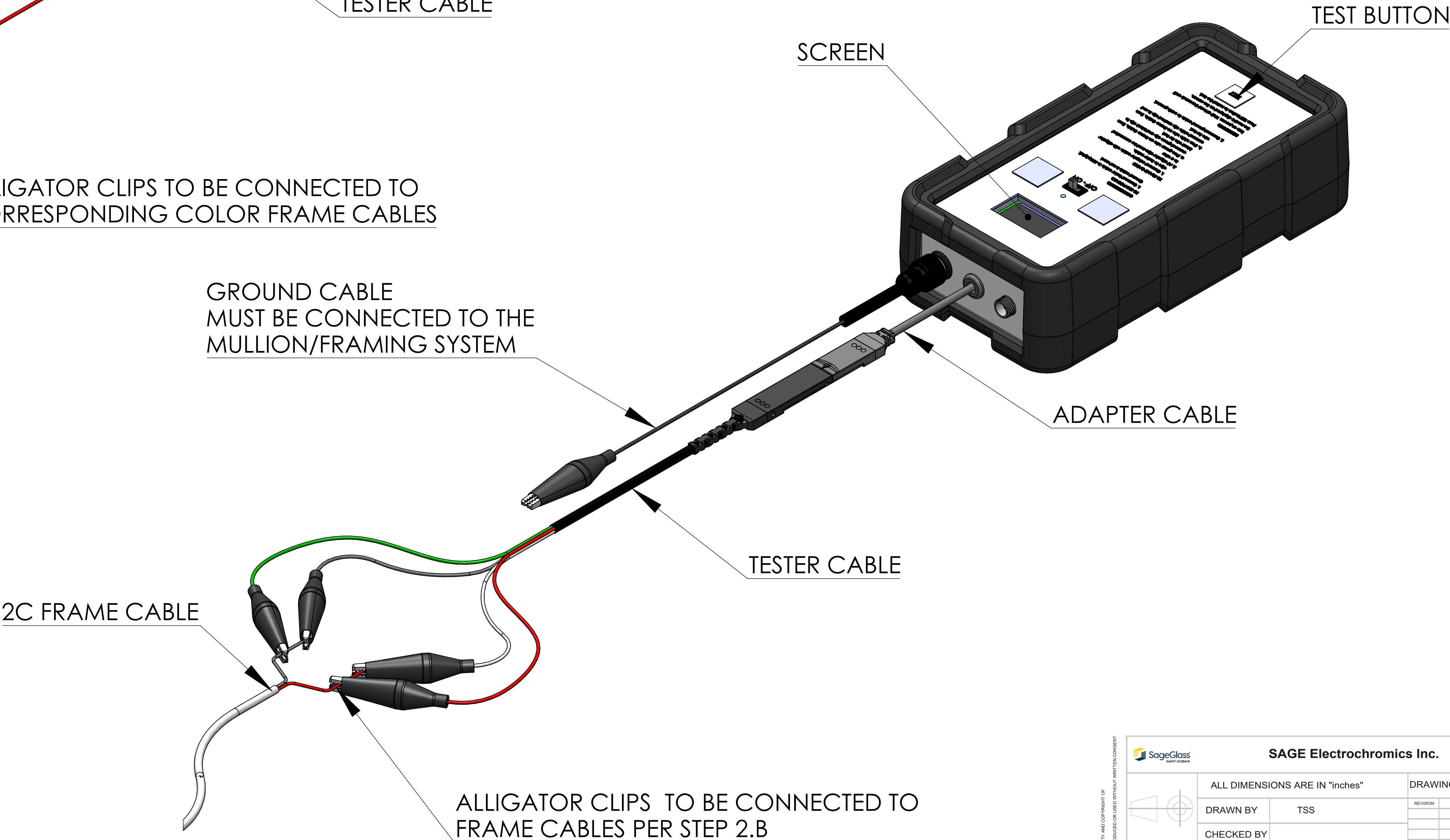


SAGE Electrochromics Inc.		DRAWING SHEET		A1
ALL DIMENSIONS ARE IN "Inches"		REVISION	APPROVED BY DATE	
DRAWN BY	TSS			
CHECKED BY				
DESCRIPTION :				
Kawneer 451T				
SCALE: 1:10	DATE : 09-12-2022	SHEET NO	6 OF 7	

TEST SET UP FOR 4C FRAME CABLE



TEST SET UP FOR 2C FRAME CABLE



- CONNECTIONS:**
- TO FRAME CABLE:**
1. Connect adapter cable with alligator clips to tester cable.
 2. All alligator clips must be connected to a wire:
 - a. If 4-Conductor frame cable, connect each alligator clip to the corresponding frame cable wire.
 - b. If 2-Conductor frame cable, connect red and white alligator clips to red frame cable wire and black and green alligator clips to black frame cable wire.
 3. Connect ground cable to earth ground. (mullion / framing system)
- TO IGU PIGTAILS:**
1. Connect tester cable to IGU pigtail. Ground cable is not used.

DIRECTIONS:

Turn on power. Wait at least 5 seconds until the result is displayed on the screen. Press TEST button to restart the test.

SAGE Electrochromics Inc.		DRAWING SHEET	
ALL DIMENSIONS ARE IN "inches"		A1	
DRAWN BY	TSS	REVISION	APPROVED BY DATE
CHECKED BY			
DESCRIPTION :			
Kawneer 451T			
SCALE : 1:1	DATE : 09-12-2022	SHEET NO	7 OF 7