

PRODUCT SHEET

SAGEGLASS SYMPHONY RESIDENTIAL KIT

The SageGlass Symphony® Residential Filter Kit reduces electromagnetic interference (EMI) so all electronics can function optimally.



PART NUMBERS

| Part Number | Description | Kit Contents |
|--------------|--|--|
| 300-1195-001 | Rooftop Sky Sensor Residential Kit | 2 x Small Ferrite |
| 300-1196-001 | Small Control Panel Residential Kit | 1 x Large Ferrite 2 x Small Ferrite 1 x Ferrite Key 1 x Ethernet Filter 1 x Ethernet Cable (152 mm length) |
| 300-1196-002 | Small Control Panel Residential Kit (EU) | 8 x Large Ferrite 2 x Small Ferrite 1 x Ferrite Key 1 x Ethernet Filter 1 x Ethernet Cable (152 mm length) |

ADDITIONAL SUPPORTING DOCUMENTATION

These instructions are modifications to the Symphony Control Panel and Ethernet Switch installed in residential applications. Refer to SageGlass Product Sheets for more in-depth information regarding the control system:

www.sageglass.com/resources.

INSTALLATION

STEP 1: INSTALL SMALL FERRITE FOR ETHERNET CABLE AT ROOFTOP SENSOR

1. Open Small Ferrite by inserting Ferrite Key into keyhole and press firmly until latches are released.
2. Place Small Ferrite on Ethernet Cable. Minimize the amount of cable between the Small Ferrite and the Rooftop Sky Sensor.
3. Clamp the Small Ferrite to close, ensuring a secure latch was made.

STEP 2: INSTALL SMALL FERRITE FOR ETHERNET CABLE AT ETHERNET SWITCH

- A. Open Small Ferrite by inserting Ferrite Key into keyhole and press firmly until latches are released.
- B. Place Small Ferrite on Ethernet Cable. Minimize the amount of cable between the Small Ferrite and the Ethernet Switch.
- C. Clamp the Small Ferrite to close, ensuring a secure latch was made.



STEP 3: SMALL CONTROL PANEL RESIDENTIAL KIT INSTALLATION

1. Open the Large Ferrite by lifting on the tabs and releasing the latches.
2. Loop the bundle of Frame Cables once around the Large Ferrite. For EU cables that have larger diameters, this process may need to be repeated as all cables may not fit within a single Large Ferrite. The EU kit includes additional Large Ferrites to accommodate this.

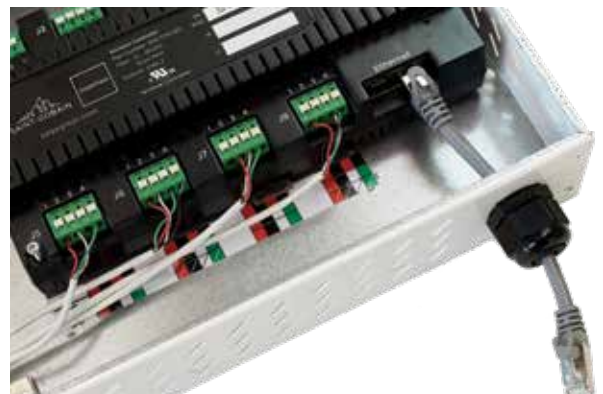


3. Keep the Large Ferrite as close as possible to the Small Control Panel to minimize the length of Frame Cables between the Large Ferrite and the Small Control Panel. Wrap cables as tightly as possible. Do not leave large amounts of slack in the loop. While cable wrapping should be tight, be careful not to damage the cable by bending them sharply at any point.
4. Clamp the Large Ferrite to close, ensuring a secure latch was made.



STEP 4: INSTALL SMALL FERRITE FOR ETHERNET CABLE AT CONTROL PANEL

1. Remove cover from the Small Control Panel.
2. Connect provided Ethernet Cable from the Small Control Panel Window Controller Ethernet port and route through the Small Control Panel knockout.



3. Open Small Ferrite by inserting Ferrite Key into keyhole and press firmly until latches are released.
4. Place Small Ferrite on Ethernet Cable inside the Small Control Panel.

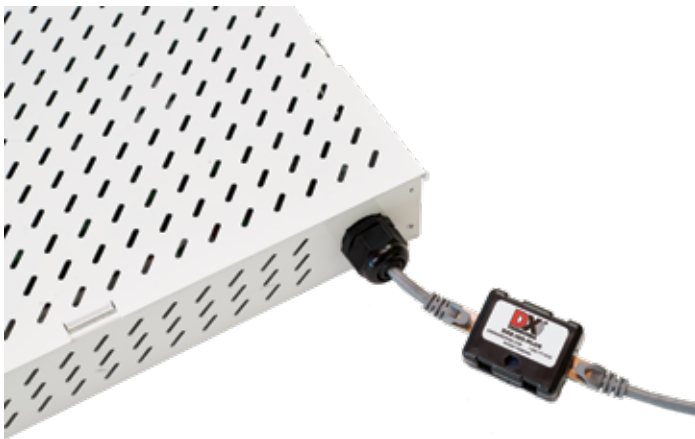


- 5 Clamp the Small Ferrite to close, ensuring a secure latch was made.



STEP 5: ETHERNET CABLES

Connect the Ethernet filter.



STEP 6: INSTALL FERRITE FOR ETHERNET CABLE AT ETHERNET SWITCH

- A. Open Small Ferrite by inserting Ferrite Key into keyhole and press firmly until latches are released.
- B. Place Small Ferrite on Ethernet Cable. Minimize the amount of cable between the Small Ferrite and the Ethernet Switch.
- C. Clamp the Small Ferrite to close, ensuring a secure latch was made.



WHY SAGEGLASS?

1,000+
Installations

27+
Countries

1,000+
Patents

SageGlass® is the pioneer of the world's smartest dynamic glass. Electronically tintable SageGlass tints or clears automatically to optimize daylight levels while preventing heat and glare without the need for blinds or shades. SageGlass delivers superior comfort, enhances occupant well-being and saves energy. As part of Saint-Gobain, SageGlass is backed by more than 350 years of building science expertise that only the world leader in sustainable environments can provide.

For additional product and instructional information, visit: sageglass.com/eu/resources